



# PARTY ELECTIONS, NOMINATION PROCEDURES AND RULES

16 NOVEMBER, 2021



## TABLE OF CONTENTS

### **PART I INTRODUCTION**

- Rule 1 Preamble
- Rule 2 General principle
- Rule 3 Interpretation

### **PART II ELECTION AND NOMINATION STRUCTURES COMPOSITION & MANDATE**

- Rule 4 The National Elections Board (NEB)
- Rule 5 County Election Panels (CEPs)
- Rule 6 The National Elections Appeals Board (NEAB)
- Rule 7 Duties of Election Officials
- Rule 8 Disciplinary Measures

### **PART III RULES GOVERNING THE PARTY ELECTIONS PROCESS**

- Rule 9 Party elections
- Rule 10 Elections of national officials
- Rule 11 Procedures to be followed after balloting
- Rule 12 Dispute and appeals
- Rule 13 Conducts of nominations for party elections
- Rule 14 Campaigns
- Rule 15 Procedures on polling day

### **PART IV RULES GOVERNING THE PARTY NOMINATION PROCESS FOR NATIONAL ELECTIONS**

- Rule 16 Categories of elections covered
- Rule 17 Qualifications of candidates



## WDM Elections and Nominations Rules 2021

- Rule 18 Disqualifications
- Rule 19 Pledge of Commitment

### **NOMINATION PROCESS**

- Rule 20 Announcements of Vacant Positions
- Rule 21 Vetting of Nominations
- Rule 22 Complaints and appeals
- Rule 23 Primaries for party parliamentary, Governor and for other civic seats
- Rule 24 Presidential nominations

### **PREPARATION FOR VOTING PROCESS**

- Rule 25 Venue/Polling Station
- Rule 26 Membership register
- Rule 27 Inspection of ballot boxes
- Rule 28 Inspection of ballot papers
- Rule 29 Communication with voters at polling stations
- Rule 30 Contents of ballot papers

### **VOTING PROCEDURE**

- Rule 31 General voting procedure
- Rule 32 Casting of vote
- Rule 33 Voting Process
- Rule 34 Evidence of identity of Voters
- Rule 35 Postponement of Polling
- Rule 36 Votes Marked by presiding officer
- Rule 37 Spoilt ballot papers



## WDM Elections and Nominations Rules 2021

Rule 38 Sealing of ballot boxes

Rule 39 Procedure on close of polls

### **COUNTING OF VOTES AND DECLARATION OF RESULTS**

Rule 40 Attendance of counting of votes

Rule 41 Rejected ballot papers

Rule 42 Recount

Rule 43 Sealing of ballot papers

Rule 44 Announcement of results

Rule 45 Signing and issuance of Nomination Certificates

Rule 46 Retention and public inspection of documents

### **POST VOTING PROCESS**

Rule 47 Petitioning the Nomination Results

Rule 48 Party list

Rule 49 Party Campaigns

Rule 50 Code of Conduct

### **ANNEXURES**



## **PART I**

### **Preface**

#### **1. Preamble**

- 1.1. The Wiper Democratic Movement (WDM) (hereinafter referred to as 'the party') is a Party whose overall objective is to unite all the people of Kenya and promote political and social democracy to build a strong, united, peaceful, and prosperous Nation.
- 1.2. To contribute to this process, the WDM shall participate in National Elections with the aim of forming a democratic government for the Republic of Kenya, which will implement its ideologies and programs to improve the quality of life for all citizens of Kenyan.
- 1.3. The party is committed to undertake both party and national election processes that are transparent and democratic and that will deliver the choice of the best and most credible leadership for both the party and the Nation.
- 1.4. These Election and Nomination Rules and Procedures are governed by the provisions of the Constitution of the Wiper Democratic Movement and cover nomination of candidates and election of the officials of the party and nomination of party candidates to participate in Presidential, Gubernatorial, Parliamentary and County Assembly Elections.



## **2. General principles**

2.1 The nomination of candidates, the election of party officials and nomination of candidates for national elections shall be guided by the following principles: -

2.1.1. The Core values of the party as expressed in the party Constitution

2.1.2. Transparency and accountability;

2.1.3. Democratic, free, fair and simple in which the will of the members of the party and the people of Kenya generally shall be paramount;

2.1.4. Promotion of gender equality, equity and affirmative action for persons from marginalized groups and social sectors including women, the youth, people with disabilities and marginalized communities;

2.1.5. Promotion of responsible, democratic, selfless and visionary leadership, acceptable to the Party members and the people of Kenya;

2.1.6. Promotion of diversity within the elected officials in terms of geographical dispersion, gender, disability and age;

2.1.7. Rules and procedures that allow the widest possible full and effective participation of the different groups of members in the society and that cultivate a democratic culture in the party and in our society.

2.1.8. Promotion of decision making by consensus where possible failing which voting acclamation and secret ballot to be used.



## WDM Elections and Nominations Rules 2021

### 2.1.9. Effective dispute resolution processes

## 3 Interpretation

3.1. These rules may be cited as the Wiper Democratic Movement (WDM) Election and Nomination Rules (hereinafter "the Rules") 2021

3.2 In these rules, unless otherwise amended: -

"Agent" means person duly accredited by a candidate as his agent.

"Candidate" means a person who has been cleared by the party in accordance to these rules.

"Commission" means Independent Electoral and Boundaries Commission (IEBC)

"Election(s)" means an election or elections referred to in these rules.

"Election Officer means a WDM election official on duty,

"NEB" or "Board" shall herein refer to the Wiper Democratic Movement National Elections Board.

"Nomination" shall refer to Nomination of candidates for WDM party elections and the nomination of party candidates for national and by—elections".

"Nomination official" means a person duly appointed in accordance with these rules or any other person officially engaged in the nomination process.

"Party" means the Wiper Democratic Movement (WDM)



## WDM Elections and Nominations Rules 2021

"Polling Station" means a place set aside for voting in accordance with these rules.

"Presiding Officer" means a person appointed or designated under these rules to preside at a polling station.

"Voters" means any person who is validly registered and in possession of WDM membership cards or membership cards of any or the founding constituent parties, identity cards and a registered voter card under the laws of Kenya.

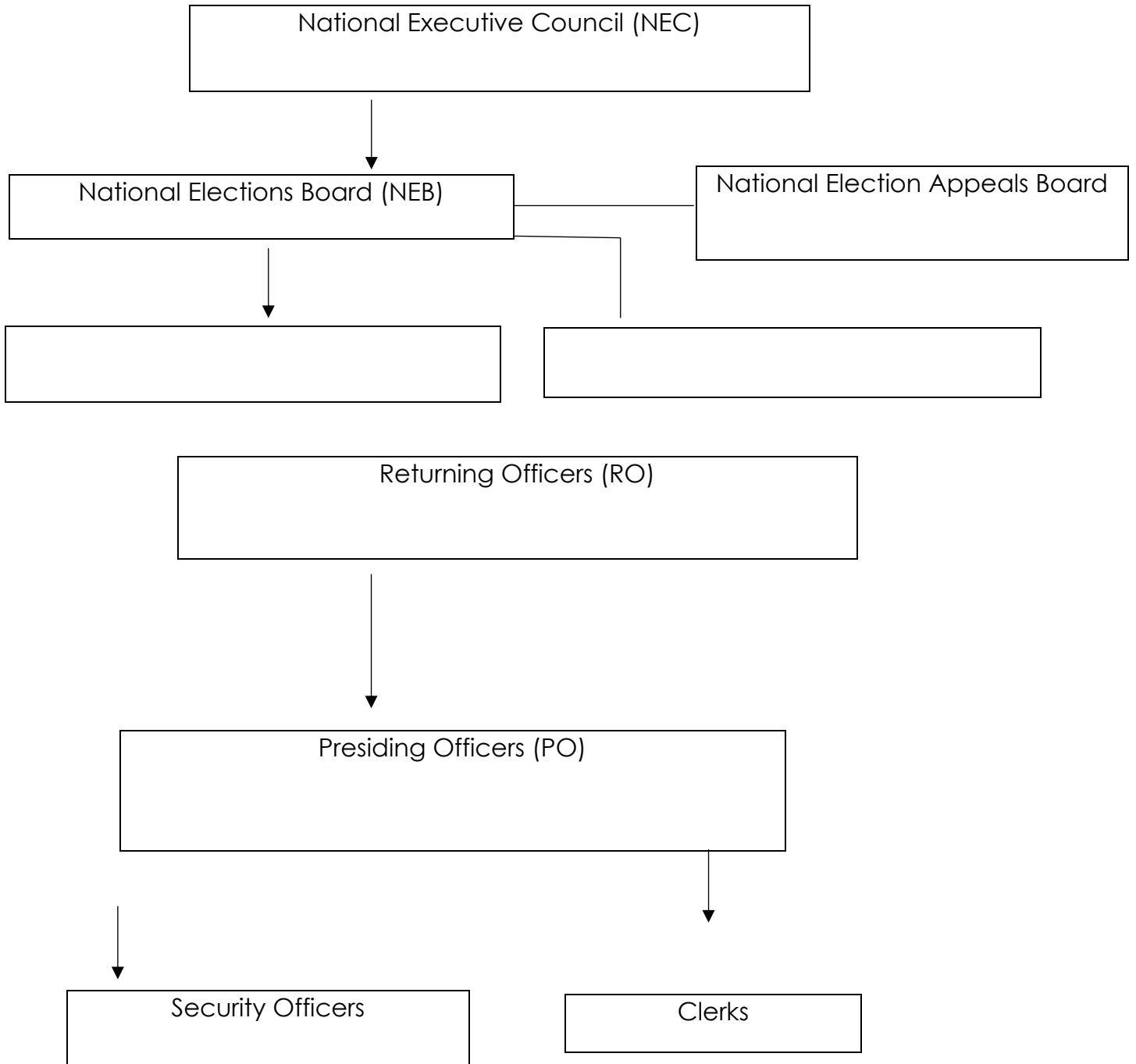




**PART II**

**ELECTION AND NOMINATION STRUCTURE**

The WDM election and nomination structure will consist of the following: -





## **4. NATIONAL ELECTIONS BOARD (NEB)**

### **4.1 Establishment of the National Elections Board**

4.1.1 There is established the WDM National Elections Board in accordance with the Party Constitution whose mandate is to plan, organize, direct, and coordinate the WDM internal party elections and the WDM Presidential, Gubernatorial Parliamentary and Civic candidate's nominations throughout the Republic of Kenya, in readiness for the Presidential, Gubernatorial, parliamentary, and County Assembly General Elections,

4.1.2 The National Elections Board will be appointed by Party Leader on the recommendations of the NEC and will comprise of not less than three (3) and not more than nine (9) members including a chairperson, a deputy chairperson and Secretary; the Executive Director shall be an *ex-official* member.)

4.1.3 The chairperson of the NEB shall be a graduate with a degree in either Law, political science, social sciences, or humanities from a recognized university with a minimum of ten (10 years' experience. Further, the Chairperson must satisfy the following requirements; -

4.1.3.1 Is a registered member of the Party

4.1.3.2 Is knowledgeable and experienced in election matters;

4.1.3.3 Is eligible to vote at an election;

4.1.3.4 Has not been convicted of an election offence; and



## WDM Elections and Nominations Rules 2021

- 4.1.3.5 Satisfies the requirements of Integrity and Leadership as contained in the Constitution of Kenya and the Leadership and integrity Legislation.
- 4.1.4 A member of the NEB shall serve for such period as shall be determined by the NEC and shall be eligible for reappointment provided that a member shall not serve for more than two (2) terms of five (5) years Consecutively.
- 4.1.5 The members of the board must be individuals of good standing and respectable with high integrity who do not hold any elective party position.
- 4.1.6 Not more than two-thirds (2/3) of members of the Board shall be of one gender
- 4.1.7 The party will endeavor to ensure that Board Members consist of individuals from different ethnic groups and that special interests are represented in the Board.
- 4.1.8 The Board Members shall be persons who are Kenya Citizens that have attained a minimum age of eighteen (18) years.
- 4.1.9 A person desiring the removal of a member of the Board or the Board itself must make an Application to the National Executive Council stating the reasons for such removal.
- 4.1.10 A Board member may be removed from office on the following grounds;
- a) If the Board Member resigns or defects the Party
  - b) Seriously violates the Party Constitution, Nomination Rules or the Code of Conduct

## WDM Elections and Nominations Rules 2021

- c) Acts that may deemed as gross misconduct while performing his/her duties
- d) Declares an interest in a particular nomination
- e) Becomes mentally incapacitated
- f) Is declared bankrupt
- g) Convicted of an election offence or criminal offence that carries a sentence of at least six months with no fine or the court finds that the person has violated provisions of chapter six of the Constitution of Kenya, 2010
- h) Death of the Board Member.

4.1.11 At the first meeting of the National Elections Board convened by National Executive Council, the Board members shall elect a Chairperson, a Vice Chairperson who shall be of a gender opposite to that of the Chairperson and a Secretary from among themselves.

4.1.12 Whenever the chairperson is absent, members of NEB shall elect from amongst themselves a member to act as the chairperson and exercise the powers and responsibilities of the chairperson

## **4.2. Duties of the National Elections Board**

4.2.1 The duties of the National Elections Board shall be; To:

- (i) Propose and review of the Party elections and nominations rules for ratification by the NEC;
- (ii) Formulate its rules of procedure for approval by NEC;
- (iii) Plan, organize, lead, co-ordinate and conduct/supervise the Party elections and nominations for Presidential, Gubernatorial, Parliamentary and Civic Candidates.



## WDM Elections and Nominations Rules 2021

- (iv) Announce the qualifications and requirements to be an aspiring party candidate in accordance with the party constitutions and relevant laws at and notify members at least one month before the party primary.
- (v) Announce the process and the timeline for identifying aspiring party candidates and notify all members at least a month before the party primary.
- (vi) Consult with NEC and issue notices to Members of the party of date, venue, and time within which applications for nomination for all elective seats shall be conducted and the timeline of return of the applications
- (vii) Invite applications from aspiring party candidates, verify the applications in accordance party requirements, verify documentations and arrange applications in accordance with the specific party ticket
- (viii) Invite eligible aspiring candidates for vetting and clearance
- (ix) Vet candidates for nominations
- (x) Present the short list of eligible candidates to the party NEC and Party Leader
- (xi) Prepare and print ballot papers
- (xii) Provide adequate equipment and nomination materials for nomination officials
- (xiii) Review and ensure updated party membership lists ahead of nominations
- (xiv) Identify suitable venues for conduct of party nominations
- (xv) Distribute nomination materials in a timely manner
- (xvi) Independently and impartially exercise its functions on behalf NEC;
- (xvii) Implement and oversee the operations of the WDM Election and Nomination Rules in accordance with the Constitution of Kenya, the electoral laws, Party Constitution and party Regulations;



## WDM Elections and Nominations Rules 2021

- (xviii) Prescribe forms and documents required for purposes of Party nominations;
- (xix) Issue an interim certificate to a candidate duly nominated upon being announced the winner;
- (xx) Issue the final list of the duly elected and nominated members to the NEC;
- (xxi) Appoint and post Returning Officers, Deputy Returning Officers, Presiding Officers, Deputy Presiding Officers, polling and Counting Clerks and Security Officers and all other necessary nominations officers as shall be necessary for the better carrying out of its mandate;
- (xxii) Accredite independent election observers and Party agents
- (xxiii) Through the office of the Director of Elections, present to the NEC a list of all candidates contesting for Party positions for all elective seats provided that the NEC may raise an objection on reasonable grounds regarding the suitability of any candidate.
- (xxiv) The objections by the NEC will be reviewed by the NEB and a decision made by consensus in the first instance failure to which it will be determined by the Appeals Board.
- (xxv) Consult with the director of elections, party leader and the secretary general in service delivery.
- (xxvi) Determine eligibility of candidates for nomination as party candidates for presidential elections.
- (xxvii) Take all the necessary measures to ensure that the WDM elections and nominations are transparent, peaceful, free and fair and that the choice of WDM candidates truly reflects the will of WDM members.
- (xxviii) If necessary to establish County/Branch Elections Panel in each Location (CEP's), make rules to govern their operation, in consultation with the National Executive Council.
- (xxix) Provide logistics relating to the nominations exercise



## WDM Elections and Nominations Rules 2021

- (xxx) Ensure the secrecy of the vote by ensuring adequate security provision
- (xxxi) Conduct nominations, count, and tally the votes
- (xxxii) Announce the results

### **5. County Elections Panel (CEP) and Branch Elections Panel (BEP)**

- 5.1 In exercising its mandate, the National Elections Board may delegate its powers and duties to County or Branch Elections panel (CEP) as stipulated in these Election and Nomination Rules and Procedures.
- 5.2 The National Elections Board in consultation with the County and Branch Executive Committee may appoint a County/Branch Elections panel where necessary to oversee the nomination and election of party officials and delegates and the nomination of party candidates for national elections at the sub-branch and branch levels. The CEP shall consist of a minimum of five (5) and a maximum of nine (9) persons fairly distributed from within the branch, at least not more than two-thirds (2/3) of each gender.
- 5.3 The duties of the County/ Branch Elections Panel, which may be carried out in consultation with the National Elections Board where may be to:
- a) Supervise the nomination and election process at Sub-Branch and Branch levels;
  - b) Determine eligibility of candidates for election as party officials and delegates at branch and sub branch level and eligibility as candidates for civic and parliamentary seats
  - c) Determine the number of and appoint Returning Officers, Deputy Returning officers, Presiding Officer, Deputy Presiding Officers, Polling and Counting Clerks and Security Officers.
  - d) Accredite independent observers and party agents.



## WDM Elections and Nominations Rules 2021

- e) Safely keep ballot boxes and other nomination materials in each constituency.
- f) Keep a register of the WDM members for each sub-location in the branch who shall be eligible to vote during the elections and nominations.
- g) Receive the names of agents from the candidates.
- h) Submit the election and nomination results directly to the National Elections Board.
- i) Undertake any other responsibilities assigned by National Elections Board related to election and Nomination Process.

## 6 **NATIONAL ELECTION APPEALS BOARD(NEAB)**

- 6.1. There shall be established a National Elections Appeals Board composed of Not less than three (3) and not more than nine (9) members including a chairperson, a deputy chairperson and a secretary. The Executive Director shall be an *ex-officio* member.
- 6.2. Not more than two-third (2/3) of members of NEAB shall be of the same gender.
- 6.3. In constituting the membership of the NEAB, the NEC and party leader shall take into considerations Individuals from different ethnic groups and special interest groups.
- 6.4. The members of NEAB shall elect one of their members who shall be of the opposite gender to the chairperson to be a deputy chairperson and another member to be a secretary to the board in their first meeting.





## WDM Elections and Nominations Rules 2021

- 6.5. The members of the NEAB shall be appointed by the Party Leader on the recommendations of the NEC.
- 6.6. The NEAB shall formulate its rules of procedures that the NEC will approve
- 6.7. The chairperson of the NEAB shall be a person qualified to hold the office of a Judge of the High Court of Kenya
- 6.8. A person shall be qualified to be appointed as a chairperson and member of the NEAB if the person is–
  - (i) Fully paid-up member of the Party
  - (ii) experienced in dispute resolution;
  - (iii) Eligible to vote at an election;
  - (iv) Not been convicted of an election offence;
  - (v) Satisfies the requirements of Chapter Six of the Constitution on leadership and integrity.
- 6.9. A member of the NEAB shall serve for such period as shall be determined by the NEC and shall be eligible for reappointment provided that a member shall not serve for more than two (2) terms of five (5) years consecutively.
- 6.10. No member of the Tribunal shall, during his or her tenure of office, be an aspirant in any party election or nomination.
- 6.11. A member of NEAB shall only be removed from office on the following grounds;
  - a) Resignation



## WDM Elections and Nominations Rules 2021

- b) Violation the Party Constitution, Nomination Rules or the Code of Conduct
  - c) Declaration of an interest in a particular nomination, elective position or party organ
  - d) Becoming mentally incapacitated
  - e) Is declared bankrupt
  - f) Convicted of an election offence or criminal offence that carries a sentence of at least six months with no fine or the court finds that the person has violated provisions of chapter six of the Constitution of Kenya, 2010
  - g) Death.
- 6.12. A vacancy in the office of any of the National Election Appeals Board official will be advertised and the advertisement will specify required qualifications.
- 6.13. The advertisement, vetting and replacement of the new member of the Board will be within a period of 14 days
- 6.14. The NEAB shall hear and determine disputes arising from;
- (i) Party elections;
  - (ii) Party nominations and
  - (iii) Party lists for nomination as Member of Parliament or County Assembly.
- 6.15. The appeals to the National Election Appeals Board shall be in writing duly signed by the Appellant and be lodged within three (3) days of announcement of the results appealed from.



## WDM Elections and Nominations Rules 2021

- 6.16. The Appellant will on appeal pay a non-refundable fee of Kshs, 5,000/= to the Party or such other fee as the party NEC may determine
- 6.17. Parties have a right to represent themselves or be represented by legal representatives of their choice before the National Election Appeals Board.
- 6.18. The National Election Appeals Board may, on its own volition and or upon applications to it, consider the matters filed and render its decision thereon
- 6.19. The hearing may be physical or virtual as the parties may elect and as the circumstances of the case may dictate.
- 6.20. Parties may be heard orally in person or the hearing can be a documents only hearing.
- 6.21. The Board will put in place measures to ensure that parties are heard and that no right to be heard is defeated by reason of distance. Provision may be made for County and Branch hearings as may be appropriate upon such a request being made to the Board.
- 6.22. The National Election Appeals Board shall, in suitable cases, have powers to Summon the Returning Officer responsible, witnesses or persons with relevant evidence and thereafter dismiss the appeal or grant orders sought including orders for re-count, re-tallying of votes or repeat of the nomination or election exercise.
- 6.23. The decision of the NEAB shall be final and binding, unless set aside, varied or substituted by a decision of the Political Parties Disputes Tribunal (PPDT).



## WDM Elections and Nominations Rules 2021

- 6.24. The NEAB shall accord a fair hearing to all parties appearing before it and give parties equal opportunity to present their cases and or otherwise defend themselves.
- 6.25. The NEAB will be independent, neutral and impartial in the determination of its cases and in the execution of its mandate.
- 6.26. Members of the Board must declare conflict of interest relating to matters that they are dealing with. The Secretary to the Board will maintain a conflict of interest register for that purpose. Any matter in which a member is conflicted will be heard in the members absent
- 6.27. Members of the NEAB shall abide by this Constitution, the Code of Conduct and the party rules and regulations.
- 6.28. The National Election Appeals Board shall consider and determine matters filed in accordance with the Constitution of Kenya, any applicable Law, party Constitution and Election and Nomination Rules within Ten (10) days of receipt of the complaints
- 6.29. NEAB shall consult with the Secretary General, Party Leader and Director of Elections in their service delivery.

## **7 DUTIES OF ELECTION OFFICIALS**

### **7.1 Returning Officers and Deputy Returning Officers**

7.1.1. They shall be appointed by the National Elections Board and shall be in charge of party elections and nominations.

7.1.2. The Returning and Deputy Returning Officer's qualifications and vetting shall be determined by National Executive Board.

### **7.2. Their duties and responsibilities shall include:**

7.2.1 Carrying out briefings and trainings for other election officials on the proper conduct or party elections in accordance with the party's Constitution and these Election and Nomination Rules.

7.2.2 Ensuring the requisite logistics are in place at the election venue.

7.2.3 Ensuring that sufficient and relevant voting materials and equipment are available including and not limited to: -

- (i) Standard and acceptable ballot papers with provision for the vacant post, name of candidate and name of election venue
- (ii) Registers containing the names of certified elected delegates from the branch
- (iii) Register of party members
- (iv) Sufficient ballot boxes
- (v) Writing materials



## WDM Elections and Nominations Rules 2021

- (vi) Indelible ink for dipping voter's fingers after voting
- (vii) Tables and chairs
- (viii) Pressure/gas lamps
- (ix) Forms for recording result and making returns
- (x) Identification cards for Election Officials
- (xi) Any Other material that may facilitate the proper conduct of election

7.2.4. Liaising with the police to ensure adequate security during party elections and nominations

7.2.5. Supervising other election officials

7.2.6. Announcement of results of the election or nominations

7.2.7. Compiling and submitting to the National Elections Board the results of the elections or nominations as the case may be

### **7.3. Presiding Officers**

7.3.1. The Presiding Officer shall be appointed by the National Elections Board and there shall be one Presiding Officer for every sub-location in the Constituency.

7.3.2. There will be a widely publicized notice inviting members of the public to apply for the position within a reasonable time.

7.3.3. The qualification and vetting procedure of the Presiding Officers shall be determined by the National Executive Council.

### **7.4. The duties of the Presiding Officer include: -**

7.4.1. Ensuring the requisite logistics are in place at the polling station

7.4.2. Supervising the polling/counting clerk



## WDM Elections and Nominations Rules 2021

- 7.4.3. Liaising with the police and Other security personnel to ensure adequate security during the elections.
- 7.4.4. Regulating the number of voters to admitted into the polling station at any given lime, and to exclude all other person except: -
- i. The candidates and their agents
  - ii. Elections Officials on duty
  - iii. Security Officers on duty
  - iv. Persons necessary in assisting the blind voters or the incapacitated.
- 7.4.5. Admit to the polling station at least one agent of each candidate and may admit as many more agents as directed by party Rules. He may refuse admission to a person claiming to an agent for a candidate, if that person does not produce a letter of as agent signed by that candidate.
- 7.4.6. Keeping order at the polling station.
- 7.4.7. Order Security Officer to immediately remove any person who misbehaves or fails to obey his lawful instructions and orders, in a polling station.
- 7.4.8. A person so removed shall not re-enter the polling station during the continuance of the without the permission of the presiding officer.
- 7.4.9. Ordering the removal of a person, or dispersal of any gathering of persons, that appears to her/him to preventing free access to and from the polling station, or to intimidating or interfering with voters. Any such Orders shall be sufficient for police or any other authorized officer to effect the necessary action.



## WDM Elections and Nominations Rules 2021

### 7.4.10 Counting of votes at the close of the polls

### **7.5. Polling/Counting Clerk**

7.5.1. The Polling/Counting clerks shall be answerable to the Presiding Officer or his or her deputy under whom they shall be working.

7.5.2. They shall be appointed and the number, qualification and vetting procedure shall be determined by the Branch Elections Panel.

7.5.3. There will be a widely publicized notice inviting members of the public to apply for the position within a reasonable period of time

### **7. 6. Their duties include:**

7.6.1. Ensuring that the requisite logistics are in place at the designated polling stream before the elections or nominations start

7.6.2. Preparing and laying out the polling station

7.6.3. Checking of the voter's details in the register

7.6.4. Issuing ballot paper to voter; direct the voter to the booth and the ballot box

7.6.5. Dipping of the voter's small left finger in ink after voting.

7.6.6. During counting, assisting the Presiding Officer in; -

- i. Separating ballot for different posts and according to candidates
- ii. Sorting out the ballot papers and separating those which are suspected to be invalid.





## WDM Elections and Nominations Rules 2021

- iii. Counting the votes by publicly displaying the votes for each candidate.

7.6.7. Carrying any other duties as may be assigned by the Presiding Officer.

### **7.7. Security Officers**

7.7.1. Shall be appointed by the National Elections Board. The number, qualification and vetting shall be determined by the National Elections Board.

7.7.2. There will be a widely publicized notice inviting members of the public to apply for the position within a reasonable period of time.

7.7.3. The role of Security Officers is to maintain law and Order during the election and nomination

7.7.4. All the security officers appointed shall be answerable to the Returning Officer.

### **8 Disciplinary Measures**

8.1 All members and staff of WDM are bound by and subscribe to the Party code of conduct as well as that provided under the Political parties Act.

8.2 An officer, clerk or other person having a duty to perform under these regulations and who without reasonable cause contravenes the same by an act or omission of these regulations shall be liable to disciplinary action.



## **PART III RULES GOVERNING THE PARTY ELECTIONS PROCESS**

### **9 PARTY ELECTION**

9.1 Party elections shall be conducted for the following organs of the party:

9.1.2 Sub-location Executive Committee

9.1.3 Sub-Branch Executive Committee;

9.1.4 Branch Delegates Congress

9.1.5 County Executive Committee:

9.1.6 National Executive Committee; and

9.1.7 National Delegates Congress.

### **9.2 Broad Qualifications**

9.2.1. The following shall constitute the broad qualifications, which candidates for nomination and election into party organs must satisfy;

- i. Eligibility under the Constitution of Kenya, Elections laws, political Parties Laws, the party Constitution rules and regulations including the code of conduct
- ii. Membership of the party,
- iii. Commitment to the ideals and core values of the party;
- iv. Payment of the required annual subscription fees;
- v. Participation in party activities;
- vi. Payment of nomination fees



## WDM Elections and Nominations Rules 2021

- 9.2.2. Active participation as a member Of the party for at least three (3) months, provided that any person unable to meet this requirement may apply in writing to the National Executive Council for exemption from the Operation of this requirement and if the National Executive Council deems it in the interest Of the party, it may exempt such member
- 9.2.3. No member may be nominated for elections to any office of the party in his or her absence unless he or She has indicated in writing that he or she is willing to serve in such office if elected or such requirements are waived by the National Executive Council.

### **9.3 Disqualification**

- 9.3.1 A person shall be disqualified from nomination and election into a position in Party if he or she;
- a. Suffers from any mental illness impairing his or her mental soundness;
  - b. Has been convicted of any corrupt practices or any felony other than a political offence;
  - c. Has been declared bankrupt and has not been discharged.
- 9.3.2 A person shall not be eligible to be elected as a Chairperson, Secretary or Treasurer of a Branch unless he or she is a fully paid up and active member of the Party
- 9.3.3 A person shall not be eligible to be elected as a national official unless he or She is a fully paid up active member of the Party.

### **9.4 Specific Qualifications**

- 9.4.1 A person shall qualify for nomination and election into a position within the party Sub-Branch Executive Committee only if she or he is a registered member in that Sub-Branch.



## WDM Elections and Nominations Rules 2021

9.4.2 A person Shall qualify for nomination and election as a delegate to the Branch Delegates Congress only if she or he is:

- a. A registered member in a sub-location within that Branch, and
- b. Elected as a delegate from the Sub-Branch, or
- c. A member of Branch Executive Committee

9.4.3 A person shall qualify for nomination and election as a member of the Branch Executive Committee only if he or she;

- a. Is a registered member in a Sub-Branch within the relevant Branch;
- b. Is as a delegate from the sub-branch;
- c. Has been an active member of the party for at least three (3) months, provided always that any member of the Party who does not meet this requirement may apply in writing to the National Executive Council for exemption from the operation of this requirement and if the National Executive Council deems it in the interest of the Party it may exempt such member.

9.4.4 A person shall qualify for nomination and election as a member of the National Executive Council only if she or he:

- a. Is a registered member
- b. Has been an active member of the Party for at least three (3) months, provided always that any member of the party who does not meet this requirement may apply in writing to the National Executive Council for exemption from the operation of this requirement and if the National Executive Council deems it in the interest of the party it may exempt such member.

9.4.6 A person shall qualify for nomination and election as a member of the National Delegates Congress if she or he is:

- a. A registered member in a Sub-location within a Branch, and



## WDM Elections and Nominations Rules 2021

- b. Elected a delegate from a Branch. or
- c. An WDM Member of Parliament, Governor, Deputy Governor, Member of County Assembly; Or
- d. A member of the National Executive Council, or
- e. A representative of a special interest group.

### **10 Elections of national officials**

10.1 The of the National Delegates Congress for the purposes of electing National Officials shall be as follows and as captured in the party Constitution;

- 8 Delegates per Branch — At least 2 must be women (1 must be a woman leader) and at least 2 must be youth (1 must be a young leader/ youth leader)
- All WDM Members of Parliament
- All National Executive Council members
- The Chairpersons of all committees and organs created by the National Executive Council
- 10 representatives of special interest groups, including at least 2 representatives of persons with disability.

10.2 The quorum for the National Delegates Congress for the purpose of conducting elections for National Officials shall be half (50%) of the members eligible to attend and participate in the elections.

10.3 Apart from other members listed above as delegates to the National Delegates Congress, only registered and paid members who are duly elected as delegates at the branch level shall attend and participate in the elections of the party's national officials during the National Delegates Congress.



## WDM Elections and Nominations Rules 2021

10.4 The names of the delegates attending the meeting must be in the register of members of the party.

10.5 Delegates attending the meeting to elect national party officials shall be required to produce a valid party membership card, a valid national identity card or passport and a national voters card.

### **10.6 Disqualification from participating in election of national party officials**

Any delegate may be disqualified by the National Elections Board from taking part in the election of national officials On grounds of proven misconduct with regard to elections including:

- i. Bribing members prior to and during the party nominations and elections.
- ii. Making public utterances and machinations that may arouse racial, ethnic, religious or gender animosities amongst the party member.
- iii. Pledging or showing allegiance to another political party without the party's consent
- iv. Promoting political violence and intimidation
- v. Misappropriating party funds and misusing party facilities
- vi. Disregarding or undermining party policy decisions including the election and nomination
- vii. Engaging in any conduct with respect to elections, which would invite disciplinary proceedings under the Constitution of the party,

### **10.7 procedures during elections for national officials**

10.7.1 Elections will be by acclamation, by show of hands and where there is no clear victory, there will be voting by secret ballot

10.7.2 Elections by secret ballot will be conducted under the guidance of the National Elections Board.



## WDM Elections and Nominations Rules 2021

10.7.3. members in positions that are not contested will be declared winners for those positions

### **10.8 Preparations for the elections**

At any National Delegates Congress, convened for the purpose of holding elections for national officials, the Director of Elections and the election officials will:

- i. Arrange for security, law and order at the venue to ensure a conducive atmosphere for the free and fair elections devoid of violence, briber or other forms of inducements and undue influence or pressure.
- ii. Ensure that all delegates have a valid party card, national identify card or valid passport and the national voters card
- iii. Ensure that only delegates in the certified list of delegates are present and participate in the elections
- iv. Ensure that there is a quorum
- v. Accredite media representatives within to cover the elections
- vi. Ensure that the venue for the elections is laid out in accordance with the method of elections to be used and that all material required for elections are available.
- vii. Confirm that all the candidates presenting themselves for elections have been duly nominated by the National Elections Board.
- viii. Post the list of candidates alongside the positions they are vying for at the election venue and bring the same to the attention of the delegates.

### **10.9 Procedures to be followed during balloting**

10.9.1 To commence elections, the designated Returning Officer shall:

- i. Call the congress to order and explain the procedures to be followed in the election



## WDM Elections and Nominations Rules 2021

- ii. Call out the vacant positions one by one and indicate the names of persons who have been duly nominated to vie for these positions

10.9.2 Where only one candidate has been duly nominated for a particular position, the Returning Officer shall determine and announce that the person has been elected unopposed.

10.9.3 Where more than one candidate has been nominated for a particular position the Returning Officer shall to conduct elections for that position.

10.9.4 The elections will be by acclamation or by show of hands in the first instance.

10.9.5. The results will thereafter be announced and winners declared

10.9.5. where there is need for elections by secret ballot, The Returning Officer shall provide the delegates with ballot papers and conduct the election for each of the positions in a systematic order until all the position have been voted for.

## **11 Procedures to be followed after the balloting**

11.1 After the balloting, the Returning Officer shall ensure that the votes for each of the positions are properly counted and or communicated or emailed to [marcusmutua790@gmail.com](mailto:marcusmutua790@gmail.com); or the contacts of the Director of Elections.

11.2 The returning officer will make a written statement and announcement of the number of ballot papers issued to him/her, the number of ballot papers other than spoilt ballot papers used in the elections, the number of spoilt papers, and the number of ballot papers not used

11.3 The candidate who receives the highest number of votes for the position shall be declared the winner. In the event of a tie, a repeat poll shall be conducted until the winner is determined.





## WDM Elections and Nominations Rules 2021

- 11.4 The Returning Officer shall announce the results publicly in respect of each position and prepare a written report and certified list of elected officials, give copies to the candidates or their agents and submit the same to the National Elections Board within 24 hours.
- 11.5 Persons elected to national offices shall assume office as soon as they are declared elected, provided that the outgoing officials shall hand over to incoming officials within seven days of the elections.
- 11.6 The Returning Officer shall after the announcement of the results and with the approval of the National Elections Board, keep all election documents and materials in safe custody for a period of 21 days. Thereafter, the Returning Officer shall hand over the documents and materials to the National Elections Board.

## **12. Disputes and Appeals**

- 12.1 Any candidate who is dissatisfied with the outcome of nominations or party elections has a right to appeal to the National Elections Appeals Board within 3 days of the announcement of the results.
- 12.2 The appeal shall be in writing, signed by the appellant and forwarded either physically or electronically
- 12.3 The National Elections Appeals Board shall hear and determine the complaint within ten (10) days of receipt of the appeal. One may appeal to the Political Parties Tribunal if dissatisfied with the decision of the National Elections Appeals Board

## **13. CONDUCT OF NOMINATIONS AND ELECTIONS**

- 13.1 There be a nomination form, which shall be completed by any member seeks nomination for any of the posts within the party.
- 13.2 The form shall provide for:



## WDM Elections and Nominations Rules 2021

- Name
- Age
- Gender
- Academic and Professional qualifications
- Occupation
- Membership Number
- Sub-Branch
- Year of Registration
- National ID Card Number or Passport Number
- Physical Address
- Nomination Fee Receipt Number
- Voters Card Number
- The position and the organ in which it is sought
- Proposer and Secondary who shall be fully paid up members
- Summary of Party activities engaged in so far;
- Statement of his or her commitment to the Party
- Date
- Signature

13.3 The form shall be accompanied by the Curriculum Vitae of the applicant

13.4 In respect of nominations of candidates at Sub-Branch and branch levels, the National Elections Board shall scrutinize the applications for nomination and determine whether the applicant satisfies all the requirements for nomination for the position.

13.5 The National Elections Board shall respectively certify that the applicant does or does not qualify for nomination. The National Elections Board shall inform the applicant of its determination in writing and publicize the same to the members. The National Elections Board shall thereafter compile a list



## WDM Elections and Nominations Rules 2021

of all the applicants and its determination on the applications and certify and submit a copy to the National Executive Council.

- 13.6 Nominations and elections for the national offices shall be supervised by the National Elections Board
- 13.7 In respect of nominations for candidates for national positions, the National Elections Board shall scrutinize the applications for nomination and determine whether the applicant satisfies all the requirements of the position.
- 13.8 with respect to National Officials, the NEC will appoint officials in act in positions that fall vacant which appointments are subject to confirmation by the NDC.

## **14 PARTY CAMPAIGNS**

- 14.1 The National Elections Board shall determine from time to time the period during which candidates shall be permitted to campaign.
- 14.2 No campaigns shall be permitted on a polling day.

## **15 Procedures on polling day**

- 15.1 The National Elections Board may determine the number and location of polling stations for the purposes of elections and nominations in the branch provided that there shall be at least one polling station in each sub-branch or ward as the case may be. Vote tallying may be conducted at the branch headquarters under the supervision of the Returning Officer
- 15.2 The National Elections Board shall provide and adequately publicize the following information:
- i. Names and numbers of polling stations and nomination polling stations.
  - ii. Dates and hours of the nominations



## WDM Elections and Nominations Rules 2021

### iii. Dates and hours of the polls

- 15.3 Each polling station shall be presided over by a Presiding Officer appointed by the NEB
- 15.4 Each candidate may appoint in writing one (1) agent per polling station. Such appointment shall be notified to the Presiding Officer.
- 15.5 No person shall vote in a sub-branch or branch other than that in respect of which he or she is registered as specified in the member's register.
- 15.6 The voting shall be by secret ballot
- 15.7 The voting day shall begin not earlier than 6.00am and close not later than 6.00pm except under special circumstances. The special circumstances shall be documented by the Presiding Officer and forwarded in a report to the Returning Officer.
- 15.8 At the close of voting at each polling station, the Presiding Officer shall in the presence of candidates or their agents, count the votes cast for each candidate and enter the results in Election Return Form 1. The Presiding Officer shall certify the form and give a copy to the candidates or their agents.
- 15.9 The Presiding Officer shall retain copies of the election return forms and submit the original to the returning officer after announcing the results of the elections at the polling/counting station.
- 15.10 The Returning Officer shall tally all the results of all the polling stations in a sub-branch or branch as the case may be, announce the results and certify and submit the results and any other report to the National Elections Board
- 15.11 The Returning Officer may where necessary certify and submit the results and any reports to the National Elections Board

## **16 Categories of elections covered**

These rules shall govern nomination of party candidates in respect of any nomination to be held for Presidential, Gubernatorial and his/her Deputy, Parliamentary and Civic/ County Assembly Elections.

## **17 QUALIFICATIONS OF CANDIDATES**

### **17.1 MEMBER OF THE COUNTY ASSEMBLY.**

17.1.1 A person seeking nomination for civic elections fulfill the following requirements:

- i. Be a Kenyan citizen with a National Identity Card holder of a valid Kenyan Passport as may be prescribed by law.
- ii. Be 18 years of age and above
- iii. Be a registered voter in that electoral area
- iv. Be a Premium Member of the party
- v. Be a registered voter in that electoral area
- vi. Proficient in Kiswahili and English. Be a fully paid up member of the sub-branch in the area in which she or he is seeking nomination.
- vii. Have an active member of the party for at least three (3) months before the time of nomination, provided that the National Executive Council may for good cause which shall specifically documented, exempt an applicant from this requirement, subject to any conditions they may deem fit.
- viii. Subscribe to the requirements as determined by NEB
- ix. Meet the minimum requirements for Civic Candidates as set out by the Independent Electoral and Boundaries Commission.

17.1.2 An applicant for nomination shall furnish the following documents: -

- i. A nomination form to presented to the National Elections Board duly completed in triplicate and signed by a Proposer and Seconder both of whom must be members of WDM and registered voters in the electoral area;
- ii. Copy of national identity card or valid passport
- iii. Demonstrate active participation in party programs thee (3) months prior to seeking nomination, provided National Executive Council may for good cause, which shall be specifically documented, exempt an applicant from this requirement, subject to any conditions it may deem fit,
- iv. One Hundred (100) names, numbers and signatures of registered voters from his/her Ward;
- v. Non— refundable fee of 20,000/- paid to Wiper Democratic Party by a Bankers Cheque or deposited in the party account and Kshs- 15,000/- for Special interest groups
- vi. A detailed Curriculum Vitae illustrating amongst other qualifications, the minimum educational qualifications above proven leadership abilities, experience in management of public affairs among others.
- vii. A copy of his or her voters card;
- viii. A copy of his or her WDM Membership Card;
- ix. Duly completed, Signed and witnessed party Code of Conduct Form.
- x. Duly completed, signed and witnessed Pledge of Commitment Form;

## 17.2 NOMINATIONS OF CANDIDATES FOR GOVERNOR

17.3.1 A seeking nomination for elections as Governor shall fulfil the following requirements:

- i. Be registered as a voter in the County for which he/she seeks election,
- ii. Be a platinum life member of the party,
- iii. Be in possession of a degree certificate obtained from a university recognized in Kenya,
- iv. Demonstrate active participation in party programs (3) months prior to seeking nomination, provided that the National Executive Council may for good cause which shall be specifically documented, exempt an applicant from this requirement, subject to any conditions it may deem fit,
- v. Meet the minimum requirements parliamentary and county candidates as set out by the Independent Electoral Boundaries Commission and such Other relevant regulation that may be in force.

17.3.2 An applicant for nomination shall furnish the following documents:

- i. Five Hundred (500) names, numbers and signatures of registered voters from his/her
- ii. Duly completed Nomination Form in duplicate.
- iii. Copy of national identity card or Passport,
- iv. A copy of Elector's card,
- v. A copy of Wiper Democratic Movement Life Membership Certificate.
- vi. Non- refundable fee of 500,000/= paid to WIPER Democratic PARTY by a Bankers Cheque or deposited in the Party's account and Kshs- 250,000/- for Special interest groups.



## WDM Elections and Nominations Rules 2021

- vii. A copy of the degree certificate obtained from a university recognized in Kenya,
- viii. Duly executed Code of Conduct Form.
- ix. Meet all other requirements under the Elections Act and Regulations made by the Commission.

### 17.4 **Parliamentary Election**

17.4.1 A person nomination for Parliamentary Elections shall fulfill the following requirements:

- i. Be a registered voter in the Constituency or county for which he/she seeks election,
- ii. Be a Kenyan citizen with a national identity card or passport;
- iii. Be eighteen years of age and above
- iv. Be a registered voter in that electoral area
- v. Be a PLATINUM life member of the party
- vi. Be proficient in English and Kiswahili
- vii. Demonstrate active participation in Party programs three (3) months prior to seeking nomination, provided that the National Executive Council may for good cause which shall be specifically documented, exempt an applicant from this requirement, subject to any conditions it may deem fit, meet the minimum requirements for Parliamentary Candidates as set out by the Independent Electoral and Boundaries Commission-

17.4.2 Candidates in respect of Parliamentary nominations shall be required to provide the following:





## WDM Elections and Nominations Rules 2021

- i. A nomination form presented to the Board duly completed in triplicate and signed by a Proposer and Seconder from WDM members who are registered voters from his/her Constituency;
- ii. Two Hundred (200) signatures of registered voters within the Constituency/County;
- iii. Evidence of active WDM membership for at least two (2) months prior to the application or National Executive Council exemption certificate.
- iv. A Non-refundable nomination fee of Kshs. 200,000/= paid to WDM by bankers cheque and Ksh- 100,000/- for Special interest groups.
- v. A detailed Curriculum Vitae indicating amongst other qualifications: -
  - a. Educational qualifications
  - b. Work experience
  - c. Relevant interests and competencies
- vi. A copy of National Identification Card or valid passport
- vii. A copy of his or her Voters card
- viii. A Copy of WDM Life Membership Card
- ix. Duly completed, signed and witnessed Code of Conduct Form
- x. Duly completed, signed and witnessed Pledge of Commitment Form

### **17.5 Presidential Election**

17.5.1 A person seeking nomination for Presidential Elections shall fulfill the following requirements:

- i. Has been an active member of the party for a period not less than two (2) years prior to the time of seeking nomination, provided that the National Executive Council may for good cause, which shall be specifically documented, exempt any applicant from this requirement.
- ii. Be a Kenyan citizen by birth with a national identity card or a holder of a valid Kenyan passport



## WDM Elections and Nominations Rules 2021

- iii. Is qualified to stand for election as a member of Parliament
- iv. Be a registered voter
- v. Be a platinum registered voter in Kenya.
- vi. Be thirty-five (35) years of age and above.
- vii. Be conversant with, support and subscribe to the Party ideology, Philosophy, Mission and Values.
- viii. Be a life of the Party
- ix. Holder of a degree from a university recognized in Kenya. Have an active member of the party for at least two (2) years before the time of seeking nomination, provided that the National Executive Council may for good cause, which shall specifically have documented, exempt any applicant from this requirement.
- x. Be of high moral standing and integrity
- xi. Meet the minimum requirements for Presidential Candidates as set out by the Independent Electoral Boundaries Commission and such other relevant regulation that may be in force.

17.5.3. Candidates in respect of Presidential nomination shall be required to provide the following:

- (i) A Nomination form to be presented to the Board duly completed in triplicate and signed 'Proposed and Seconded by WDM members who are registered voters.
- (ii) Evidence of active WDM for at least two (2) years prior to making the application.
- (iii) A copy of elector's card
- (iv) A copy of Wiper Democratic Movement Life Membership Certificate

## WDM Elections and Nominations Rules 2021

- (v) Be qualified to stand in an election which he/she seeks under the provisions of the Law for the time being regulating and governing the conduct of elections in Kenya.
- (vi) Sign the party Code of Conduct and abide by the party Pledge of Commitment.
- (vii) Two thousand (2000) signatures of duly registered voters
- (viii) A Non-refundable nomination fee of Kshs. 1,000,000/= paid to Wiper Democratic Movement by a Bankers Cheque or deposited in the Party's account and Ksh- 900,000/- for Special interest groups.
- (ix) Submit a detailed Curriculum Vitae indicating education qualification, proven leadership abilities, experience in management of public affairs among Others
- (x) Duly completed, signed and witnessed Party Code of Conduct Form.
- (xi) Duly completed, signed and witnessed Pledge of Commitment Form
- (xii) A copy of the National Identification Card;
- (xiii) Two thousand (2000) signatures from at least twenty-four (24) counties consisting of WDM members who are duly registered voters,
- (xiv) Not owe allegiance to a foreign State or another political party.
- (xv) A copy of their Voter's Card;
- (xvi) A copy of WDM Premium Membership Card;
- (xvii) Duly completed, signed and witnessed Code of Conduct Form;
- (xviii) Duly completed, signed and witnessed Pledge of Commitment Form



## **17.6 PARTY LIST-SPECIAL SEATS.**

17.6.1 The NEB shall nominate and present a list of members to the Commission in the category of Party. List members in accordance Articles. 97 (I)(C), 98 (b), (c), (d), 177 (I)(b), (c) of the Constitution of Kenya and Section 34 of the Elections Act NO. 24 Of 2011.

17.6.2 In the case of persons nominated pursuant Article 177(I) (c) of the Constitution, the party list shall include a certification in the manner prescribed by the Commission.

17.6.3 A person nominated under the foregoing provisions be a person who is a member of the Party on the date of submission of the party list to the Commission.

17.6.4 The party list shall comprise the appropriate number of qualified candidates and alternates between male and female candidates in the priority in which they are listed except in the case of the seats provided for under Article 98 (I) (b) of the Constitution.

17.6.5 The party list shall reflect the regional and ethnic diversity of the people of Kenya save in case of county assembly seats.

17.6.6 The party list shall not contain a name of a candidate nominated for an election.

17.6.7 The qualifications and disqualifications prescribed for Members of Parliament and County Assembly shall apply to the Nomination for special seats.

## **18. Disqualifications**

18.1 A shall be disqualified from seeking nomination for civic, parliamentary and presidential elections if that person:



## WDM Elections and Nominations Rules 2021

- a. Has been convicted of any criminal offence amounting to a felony other than a political offence, provided that the National Executive Council may for good cause, which shall be specifically documented, exempt any applicant from this requirement
- b. Is an undischarged bankrupt
- c. Suffers from Mental and/or physical impairment, which adversely affects the ability to carry out the duties of the office.
- d. Has uncleared arrears with the party in terms of contribution
- e. Has been guilty of misconduct or dishonesty in the conduct of party affairs.
- f. Does not qualify to hold office pursuant to the provisions of the Constitution of Kenya, 2010, the Elections Act No. 24 of 2011, the Constitution of the party and such other relevant laws and regulation that may be in force.

### **19 Pledge of Commitment**

- 19.1. All applicants for nomination as party candidates shall sign a code of conduct, pledge or commitment to contribute monthly towards the financing of party operations and copy of the party manifesto which must be witnessed by a Commissioner of Oaths or Magistrate. The amounts to be pledged by party candidates shall be set and reviewed from time to time by the National Executive Council. The amounts pledged shall be recoverable by the party as a civil debt.

## **NOMINATION PROCESS**

### **20 Announcement of Vacant Positions**

- 20.1 Upon a resolution by the National Executive Council, the National Elections Board shall advertise and receive applications in forms prescribed in these



## WDM Elections and Nominations Rules 2021

rules for Party Elections for nominations for the positions Presidential, Governor, Parliamentary and County Assembly Candidates. The advertisement shall contain such details as the Board shall deem necessary.

- 20.2 All interested persons shall submit their duly filled nomination forms and payment receipts to the National Elections Board in respect of County Assembly, candidates for onward transmission to the WDM Secretariat in respect of Presidential, Gubernatorial and Parliamentary Candidates, attaching all required documents.
- 20.3 All interested persons seeking nomination in respect of any election where these rules apply, shall submit to the National Elections Board, a duly completed Pledge of Loyalty Form.
- 20.4 The National Elections Board shall present to the WDM National Executive Council the names of the Presidential, Gubernatorial Parliamentary and County Assembly candidates who have applied for nomination.
- 20.5 The party shall compile and publish the list of names of all persons who have been duly nominated in at least two newspapers in circulation throughout Kenya. Copies of the lists of the names shall be set to: -
- (a) All the Returning Officers,
  - (b) National Elections Board
- 20.6 The list compiled and published shall be open for inspection at all offices of the Returning Officers by all interested parties in the Party nominations, for a period of not less than three days.
- 20.7 Any person who considers that her/his name has been wrongly or unfairly omitted from that list, shall have the right to appeal to the National Election Appeals Board set herein within a period of 48 hours after the expiry of the inspection period, provided that this deadline may be extended in exceptional; circumstances, which shall be specifically documented.



## WDM Elections and Nominations Rules 2021

- 20.8. The NEAB will hear and determine the complaint relating to list of nominees and candidates within a period of 3 days after the filing of the complaint taking care to ensure that the party concerned is heard relating to the complaint.
- 20.9 Appeals from the decisions of the NEAB will be filed at the Political Parties Disputes Tribunal
- 20.10 The Party will take measures to ensure that not more than two thirds of the members in the published list are of the same gender
- 20.11 The measures could be based on affirmative action including that part of tickets for elective seats for Parliament are reserved for women members in a manner that the Party NEC will determine.

## **21 VETTING OF NOMINATIONS**

- 21.1 The NEB shall be responsible for vetting of candidates in accordance with the Constitution of the Republic of Kenya, The political Parties Act, 2011, The Elections Act, 2011, The County Government Act, 2012, the Party Constitution and Party Election and Nomination Rules. In vetting a candidate, the NEB shall take into account the following:
- (i) The contribution of the candidate to the Party activities.
  - (ii) Demonstrated loyalty to the party, its leadership and organs.
  - (iii) Ability to represent the area for which the candidates seek nomination.
  - (iv) Ability to articulate and propagate party policies and ideology.
  - (v) Member skills and qualifications that are of benefit to the Party
- 21.2 The vetting of all candidates shall be conducted by the National Elections Board.



## WDM Elections and Nominations Rules 2021

- 21.3 The National Elections Board shall vet all senator, parliamentary and governor aspirants at a venue and time determined in accordance with the Party's electoral calendar.
- 21.4 The National Elections Board shall transmit a list of all qualified applicants to the National Executive Council within 48 hours of the end of the vetting process.
- 21.5 The vetting of candidates for the presidency shall be conducted by the National Secretariat.
- 21.6 The National Secretariat shall transmit a list of cleared candidates to the National Executive Council within 48 hours of the end of the vetting process.
- 21.7 On the day and at the time specified by the National Elections Board for vetting, all candidates/proxies shall present themselves before National Elections Board, with the following documents
- a) A National Identity Card
  - b) Party Membership Card
  - c) Voters Card
  - d) Nomination fees receipt
  - e) Current 3 passport-size color photographs with their full names printed and signed at the back.
- 21.8 Any candidate who fails to present herself/himself or his/her proxy on the day, time and place specified in accordance with the rules shall be disqualified from the nomination.
- 21.9 Where there is only one successful applicant or the applicant is unopposed such applicant shall be declared the Party's candidate. If there is more than one candidate, the National Elections Board will prepare and announce the list of all approved and organize party nominations as appropriate.



**22 COMPLAINTS AND APPEALS**

22.1 All complaints and appeals in connection with the vetting and nominations of civic candidates shall be submitted to the National Election Appeals Board in writing by the aggrieved party personally or through his duly appointed agent within 48 hours of announcement of the list of party nominees.

22.2 All complaints and appeals in connection with the vetting and nominations of parliamentary candidates shall be submitted to the National Election Appeals Board in writing by the aggrieved party personally or through his duly appointed agent within 48 hours of announcement of the list of party nominees.

22.3 The National Appeals Tribunal shall determine complaints and appeals within 72 hour or receiving the same.

22.4 The NEAB shall ensure each party has an opportunity to be heard

22.5 The decision of the NEAB shall be final however, a party that is aggrieved by the decision of the board has a right to Appeal to the Political Parties Tribunal.

**23. PRIMARIES FOR PARTY PARLIAMENTARY, GOVERNOR AND CIVIC CANDIDATES.**

23.1 Party Primaries for the nomination of member of the County Assembly, Governor, Member of the Senate, Member of the National Assembly and County Woman Representative shall be by way of all universal suffrage of registered voters as per the IEBC register of voters or any other mode of election method deemed appropriate by the National Elections Board at the polling Station.



## WDM Elections and Nominations Rules 2021

- 23.2 The NEC shall by a resolution determine the mode of election in any electoral area in the Republic of Kenya provided that NEB shall publish such resolutions not later than twenty- one days to the date of party primaries.
- 23.3 The party may request the Commission to conduct and supervise the nomination of Candidates.
- 23.4 The NEB shall designate such number of polling stations as might be convenient to voters to access voting centers publish them not later than twenty-one days (21) to the polling
- 23.5 Presiding Officers shall count and tally votes cast at each Polling Station and forward them to the Constituency Returning Officer who shall make the final tally before announcing result of the elections in respect of the Member of County Assembly Representatives and Member of National Assembly.
- 23.6 The Constituency Retuning Officer shall submit forthwith the vote tally to the County Returning Officer who shall make the final tally with respect to nominations for Members of Senate, Governor and County Women Representatives before making public the result of Party nomination for County elections.
- 23.7 Announcement of results and issuance of nomination certificates;
- i. Each Returning Officer shall tabulate and collate certified results received from Presiding Officers at the Polling stations level and promptly announce the results in the presence of all the candidates or their agents.
  - ii. The Returning Officer shall thereafter issue a certificate of return showing the total number of votes garnered by each candidate in every polling station and which shall be signed by either the



## WDM Elections and Nominations Rules 2021

candidate or their agents and a certified copy of which shall be immediately forwarded to the National Elections Board.

- iii. Upon receipt of the certified copy of the certificate of return from the National Election Appeals Board and where no appeal has been lodged at the National Appeals Board, the NEB shall proceed to process and issue the nomination certificate to the declared winner within seven (7) days of the primaries or determination of a dispute.
- iv. The NEB shall accordingly enter the name of the winner on the party list and the same shall not be removed except by a decision of the Independent Electoral and Boundaries Commission Complaints and Dispute Resolution Committee or an order of the High Court.

23.8 Where more than one candidate qualified for nomination, there shall be a primary election to nominate the Party's candidate.

23.9 All nominated paid up members of WDM are eligible to participate in the Primaries for party parliamentary and civic nomination. On the date determined for polling, eligible voters shall be identified by availing the following documents:

- i. Party membership card (for members of founding parties) and WDM
- ii. membership card (for individual paid up members of WDM)  
National Identity Card
- iii. Voters Card

## **24 Presidential Nomination**

24.1 The county/branch (constituency) shall be the basic Electoral College.

24.2 Each county/branch shall establish an electoral college not later than the 1<sup>st</sup> quarter of the election year, consisting of 50 duly elected presidential



## WDM Elections and Nominations Rules 2021

nomination delegates Presidential Nomination Delegates (PNDs) from each sub-location within the branch.

24.3 The 50 presidential nomination delegates from each ward shall be elected through the following procedure:

- Members shall assemble at the sub location on a date and venue to be announced by the National Executive Council and elect 50 delegates from among themselves,
- Voting will be by either acclamation, by show of hands or secret ballot. The delegates shall however, after due consultations, be at liberty to determine the most suitable method of voting as may be democratically agreed upon the electorate.
- The names of the 50 presidential nomination delegates shall be forwarded by the branch Elections panel to the National Elections Board who shall compile and certify the Presidential Nomination Delegates Register.

24.4 There shall be one polling station per ward. On the date designated for the presidential nomination, the members of the electoral colleges shall assemble at their respective polling station and vote by secret ballot between 12 noon and 3 pm.

24.5 The ballot papers for each candidate shall be counted within the polling station and the results transmitted to the branch headquarters for compilation and tallying by the Returning Officer and onward transmission to the National Elections Board.

24.6 The National Elections Board shall compile the total votes cast for each candidate and the winner shall be the candidate that garners 50% plus one of the total votes cast.



## WDM Elections and Nominations Rules 2021

- 24.7 If there is no outright winner, there shall be a run-off between the 1<sup>st</sup> and 2<sup>nd</sup> candidates to be held within 14 days of completion of the first election in and The rules above shall apply mutatis mutandis in the run-off.
- 24.8 The National Elections Board shall announce and publicize the results from all the branches at a Special National Congress called for that purpose Special National Delegates Congress shall declare the presidential candidate for the party.

### **Preparation for Voting Process**

#### **25 Venue/Polling Station**

The polling station(s) where the nomination shall take place shall be determined by the National Elections Board.

#### **26 Membership Register**

- 26.1 All paid up WDM members and members of founding constituent parties shall be entitled to vote during the nomination.
- 26.2 No person shall vote in a constituency other than that in respect of which he/she is registered as a voter.

#### **27 Inspection of ballot boxes**

Just before the commencement of the poll, the Presiding Officer shall show all those persons lawfully present in the polling station, and shall allow the candidates and/or their agents to ascertain that all the boxes are empty.

#### **28 Inspection of Ballot Papers**

The Presiding Officer shall allow those candidates or their agents who are present at the station before polling commences to inspect the ballot papers provided for use at that polling station and note the serial numbers thereon.

**29 Communication with voters at the polling station.**

No party member other than an election official or security officer on duty shall except with the authority of the President Officer conduct any communication for the purpose of voting whatsoever, with a voter who is in the immediate precincts of the polling station. This regulation shall not apply to a companion of a blind or incapacitated voter from communicating with the voter.

**30 Contents of Ballot Papers**

Every ballot paper for use at any election shall:

- i. Contain the names and photographs (Optional) of persons entitled to have them Imprinted thereon.
- ii. Be capable of being folded up.
- iii. Have a serial number printed on the front

**VOTING PROCEDURE****31 General Voting Procedure**

Where there is more than one candidate who have presented their papers before the returning officer, voting shall be secret ballot so as to determine the candidate for the General Election, where there is only one candidate there shall be no voting.

**32 Casting of Vote**

All eligible registered Kenyan citizens with the necessary documents shall be allowed to cast their votes in their respective stations.

**33 Voting Process**

- i. An eligible voter will have to present her/his voter's card, national ID/ valid passport to Clerk No. 1

- ii. Clerk No.1 shall check the voter's details in the register and upon satisfaction shall pass the documents to Clerk No. 2.
- iii. Clerk NO. 2 shall in turn issue a ballot paper to the voter, direct the voter to the booth and ballot box. Clerk NO. 2 shall then pass the voters documents to Clerk No.3
- iv. Clerk No. 3 shall dip the voter's small left finger in ink and return the voters documents to the voter. He/she shall direct the voter on the way out of the station.

### **34 Evidence of Identity of Voters**

- i. A Presiding Officer shall require a person applying for a ballot paper to produce her/his identity card issued under the Registration of Persons Act, as well as a valid WDM or founding constituent party membership card.
- ii. If a person presenting himself/herself to be a particular voter, applies for a ballot paper and produces a voter's card and a WDM or founding constituent party membership card purporting to be issued in his name and either,
  - a. Some other person has already been issued with a ballot paper in the name  
  
of the voter and the person so applying produces satisfactory evidence of his identity as that voter or
  - b. The Presiding Officer is satisfied that the person duly applied for registration as an and was for registration but;

## WDM Elections and Nominations Rules 2021

1. Her/his name was omitted from the register of voters of WDM register by mistake or
2. That person does not produce to the Presiding Officer his/her identity when so requested under paragraph (i) of this rule, but produces a written declaration, in a form acceptable to the Presiding Officer, as to her/his identity, the Presiding Officer shall allow that person to vote, but shall record a statement of the particulars of the case.

### **35 POSTPONEMENT OF POLLING**

35.1 The Presiding Officer may in consultation with the National Elections, postpone or adjourn voting process at his/her polling station. where they are interrupted by riot, natural catastrophe or other cause. He shall then start at the earliest practicable moment. The discretionary powers of presiding officer shall include power in circumstances of transferring the voting process to another polling station in the same constituency. Where he she does so: -

- a) He shall advertise the fact in such a manner as he/she thinks sufficient to bring the notice of voters and
- b) The polling area for the polling station from which the voting process is transferred shall, for all purposes of the regulation, be deemed to be part of the polling area of the polling station to which proceedings are transferred.

35.2A Presiding Officer may in consultation with the National Elections Board extend the hours of polling station where polling has been interrupted





## WDM Elections and Nominations Rules 2021

under this regulation, and shall, where polling station has started late, extend the hours of polling by the amount of time which was lost in so starting late.

- 35.3. On the adjournment of the poll in a polling station, to another day, or on the close of the poll at one station with a view to transferring a ballot box to another station, and at any other time, a ballot box is not in use of the purpose of receiving ballot papers, the Presiding Officer shall close up the aperture used for the insertion of ballot papers in to the box and place his seal on it in such a manner as to prevent the insertion of ballot papers without breaking the seal

### **36 Votes Marked by Presiding Officer**

36.1 A Presiding Officer on application at the polling station shall allow: -

- i. A voter who is incapacitated to be assisted by either his/her own agent or a person appointed by the Presiding Officer.
- ii. With the assent of the voter, a vote to be cast on behalf of a voter who declared orally that she/he is unable to read or otherwise requests the assistance of the Presiding Officer. In both instances above, the Presiding Officer shall by means of a distinct mark, "VA" (Voter Assisted), placed opposite the name of the elector on the voter's register, indicate that the vote was so cast and the reason therefore, and the Presiding Officer shall allow one representative of each candidate to witness the marking of the vote under the regulation.

### **37 Spoilt Ballot Papers**

37.1. A voter who has inadvertently dealt with her/his ballot paper in such a manner that it cannot conveniently be used as a ballot paper, may on delivering it to the Presiding Officer and proving to the satisfaction of such officer the fact of the inadvertence, obtain another ballot paper and the spoilt ballot paper shall be immediately cancelled and the counterfoil thereof marked cancelled accordingly.

### **38 Sealing of Ballot Boxes**

- i. After the ballot boxes are sealed, the Presiding Officer shall cause them to be placed in the polling station, where they can all the time be in the view of himself/herself of the Deputy Presiding Officer and in the view of all the candidates or their agents.
- ii. After the ballot box has been sealed the seal shall not be broken or the aperture opened until broken and opened in the presence of those persons who were lawfully present in the polling stations.
- iii. Where the Presiding Officer affixes her/his seal on a ballot box or on the aperture thereof, under this regulation, she/he shall permit any candidate or agent of a candidate, who so wishes, to affix her/his on the box or aperture.

### **39 Procedure on Close of poll**

- i. Immediately after the close of the poll at her/his polling station the Presiding Officer shall make a written statement of: -
  - a) The number of ballot papers issued to him/her
  - b) The number of ballot papers other than spoilt ballot papers used

## WDM Elections and Nominations Rules 2021

- c) The number of spoilt papers
  - d) The number of ballot papers remaining unused.
- ii. Immediately after the completion of the statement under the above paragraph, the Presiding Officer in the presence of those candidates or their agents as are then present with him, shall make into separate packets: -
- a) The spoilt paper, if any
  - b) The marked copy of the register
  - c) The counterfoils of the used ballot papers

The packets containing the aforesaid statement, any statement/s and marked copies of registers and each of the ballot boxes in use at the polling station shall be sealed in such a manner as to prevent the introduction of any matter into the packets or boxes or the opening thereof, and the Presiding Officer shall allow any candidate or agent who may so desire to affix her/his seal and padlock on the packet or box and keep the keys.

- iii. After complying with the foregoing provision of the regulation, the Presiding Officer shall, as soon as practicable, deliver the boxes with the keys, if any, attached, and the sealed packets to the Returning Officer who shall take charge therefore, and the Presiding Officer shall permit candidates or their agents to accompany the ballot boxes and sealed packets in the course of delivery to the Returning Officer.

**COUNTING OF VOTES AND DECLARATION OF RESULTS****40 Attendance at counting**

- i. The Returning Officer Shall make arrangements for the counting in the presence of the candidates and their counting agents if they so desire, of the votes cast in an election
- ii. No agent of a candidate shall be deemed to be a polling or counting agent unless; at thirty-six hours before the close of the poll in that election, the name and address of the agent and she/his appointment as such by the candidate has been transmitted to the Returning Officer. The Returning Officers shall not allow a person whose name, address and authorization have not been transmitted to attend to the counting of the notwithstanding that the appointment of the person is otherwise in order.
- iii. The Returning Officer shall take such steps as she/he deems reasonable give to the candidates and their counting agents, notice of the time and place at which she/he will begin to count the votes.
- iv. Notwithstanding the foregoing provisions of this regulation a Returning Officer shall not be obliged to admit more than two counting agents of any one candidate to the counting of votes.

**41 Rejected Ballot Papers**

- 41.1. At the counting of votes at an election, any ballot paper
  - a. On which votes are given for more than one candidate
  - b. On which anything is written or so marked as to be uncertain for whom the vote has been cast shall subject to paragraph (ii) below, be void and shall not be counted after display to all

## WDM Elections and Nominations Rules 2021

agents/observers/counting clerks present and the reasons noted on the reverse of the ballot paper.

41.2. A ballot paper on which a vote is marked: -

- a) Elsewhere than in the proper place or
- b) By more than one mark shall not by reason thereof be void if an intention that the vote shall be for one or other of the candidates as the case may be clearly appear, and the manner in which the paper is marked does not of itself identify the voter and it is not shown that the voter can be identified thereby
- c) In a joint election the fact that a ballot paper has been placed in the wrong box shall not by itself make the ballot paper void and the Presiding Officer shall cause that ballot paper to be counted together with others in the election to which it relates.

41.3. A Returning Officer shall, so far as practicable proceed continuously with the counting of votes, allowing time only for refreshment.

41.4. A Returning Officer shall not commence to count votes unless she/he is of the opinion that she/he can conveniently complete the count or any recount, without break. Once the ballot box is opened, the counting must be finished before the breaking. But having commenced the count, she/he may if she/he considers it desirable and after consultation with such candidates and their counting agents present, exclude the hours between seven O'clock in the evening and nine O'clock in the following morning.



## WDM Elections and Nominations Rules 2021

41.5. During any time excluded under paragraph (v), the returning officer shall place the ballot papers and documents relating to the election under he/his own seal of the candidates and their counting agents as may consider to affix their seals and shall otherwise take due and proper precautions for security.

### **42 Recount**

42.1. Candidates or counting agents, if lawfully present when the counting or any recount of votes is completed may require the Returning Officer to have the votes recounted, or the Returning Officer may, on his own initiative have the votes recounted or again recounted but shall be in sole discretion of the Returning Officer whether or not to order a second or subsequent recount.

42.2. No steps shall be taken on the completion of a count or recount of votes until the candidates and the counting agents present at the completion have been given a reasonable opportunity to exercise the rights given by this regulation.

42.3. Every rejected ballot paper shall be marked with the word "Rejected" but the Returning Officer, and, if any objection is made by the candidate or counting agent to the rejected paper, the Returning Officer shall add the words "rejection objected to."

42.4. After the counting of votes is finally concluded, the Returning Officer shall draw up a statement showing the number of rejected ballot papers under such or the following heads of rejection as may be applicable.

- i. Want of official mark

## WDM Elections and Nominations Rules 2021

- ii. Voting for more than one candidate
- iii. Writing or marking by which the voter might be identified
- iv. And any candidate or counting agent shall, if she/he so desires be allowed to copy that

### **43 Sealing of Ballot Papers**

43.1. Upon the completion of a count (including any recount), the Returning Officer shall seal up in separate packets; -

- i. The counted ballot papers
- ii. The rejected ballot papers together with the statement relating thereto

### **44 Announcement of Results**

44.1. When the count, including any recount of voters at a nomination is completed, the Returning Officer shall announce the results to the persons then present naming candidates, and publicly announcing the number of votes cast for each of the candidates. He shall thereafter declare the candidate receiving the highest number of votes as duly nominated to proceed to the Parliamentary or Civic election. The announcements of the national results shall be made within 48 hours of the nominations.

### **45 Signing and Issuance of Nomination Certificates**

45.1. Subject to the determination of any appeals, a nomination certificate shall be issued to the successful candidate, which certificate shall be signed by the Chairman of the National Elections Board & 2 other members of the National Elections Board whose names shall have been communicated to the independent

Boundaries Commission, as the ones authorized to sign patty nomination certificates,

#### **46 Retention and Public Inspection of Documents**

- 46.1. All documents relating to an election after the election results have been declared shall not be destroyed until the expiry of one (1) year
- 46.2. Documents retained under this regulation other than ballot papers and their counterfoils shall be made available for inspection at a fee at a date, venue, date and time prescribed by the National Executive Council by any member of the public, upon a written request made by him/her, at such time and subject to conditions as may be decided by the Returning Officer and National Executive Council.
- 46.3. For the purpose of an inspection under paragraph (ii) above, the Returning Officer shall unseal the documents concerned in the presence of a witness, who shall not be the person making inspection. The Returning Officer shall seal the documents in the presence of the witness after inspection is completed.
- 46.4. A Returning Officer shall on request issue copies or extracts from, any document open to the public inspection under this regulation on payment of such fees as may be sanctioned by the Party.



## **POST VOTING PROCESS**

### **47 Petitioning the Results**

- 47.1 Any dissatisfied candidate for nomination may appeal to the National Appeals Tribunal and the appeal will be dealt with as laid out in Article 6 above.
- 47.2 He/she should have evidence to support his/her allegations such as:
- i. Witnesses
  - ii. Persons arrested in regard to the office
  - iii. Vote counting irregularities e.g. duplications, irregularities, etc.
  - iv. Complaints made at the nominations/polling stations to any party agent, county, branch, national elections board or party official county/ application serial
  - v. Photographic/video evidence

### **48. PROCEDURE AND CRITERIA FOR THE NOMINATION OF THE CANDIDATES INTO THE PARTY LIST BY THE WIPER DEMOCRATIC MOVEMENT.**

#### **48.1. Party List Procedures**

48.1.1. The Wiper Democratic Movement shall submit the Party list to the IEBC according to the laid down procedures and the law.

48.1.2. The National Election Board of the party in consultation with the party leader will prepare and submit the party list to the IEBC.

48.1.3. The party list should be ready at least one month prior to the requirement by the Commission for purposes of transparency and accountability.

**48.2. Party Lists to be submitted to the Commission shall consist of the following: -**

- 4.2.1 National Assembly Party List-Twelve (12) nominees to the National Assembly [Art. 97(1) (c) of the Constitution].
- 4.2.2 Senate (Women) Party List- Sixteen (16) women nominees to the Senate [Art.98 (1) (b)of the Constitution].
- 4.2.3 Senate (Youth) Party List-Two (2) youth nominees to the Senate [Art.98 (1)(c) of the Constitution].
- 4.2.4 Senate (Persons with disability) Party List-Two (2) persons with disability nominees to the Senate [Art.98 (1)(d) of the Constitution].
- 4.2.5 County Assembly (Marginalized Group) Party List-47 Lists, each representing a county and separately consisting of eight (8) marginalized group nominees to the County Assembly [Art. 177(1)(c) of the Constitution].
- 4.2.6 County Assembly (Gender) Party List- 47 Lists, each representing a county and separately consisting of several nominees equal to the number of wards in the respective county [Art. 177(1)(b) of the Constitution].



### **48.3. Wiper Democratic Movement General Requirements for Party Lists**

48.3.1. The Party Lists must comply with:

- i. The Constitution 2010,
- ii. The Elections Act, 2011 as amended by The Statute Law (Miscellaneous Amendment) Act, 2012,
- iii. The Elections (Amendment) Act, 2012,
- iv. The Elections (Amendment) (No. 2),
- v. The Political Parties Act, 2011
- vi. Other relevant laws
- vii. The Wiper Democratic Movement party constitution and the party nomination rules.

### **48.4. the WDM party list procedure**

48.4.1 The party shall nominate and submit a list of all the persons who would stand elected if party were to be entitled to all the seats on the Party Lists;

48.4.2 The Party List comprises of the appropriate number of qualified candidates and alternates between male and female candidates in the priority in which they are listed. However, this criterion does not apply to the Senate (Women) Party List [Article 98(1)(b) of the Constitution], as all 16 nominees are women.

48.4.3 The Wiper Democratic Movement shall at least two weeks before the party nomination of Party Lists, announce the fees to be levied by the party on every aspiring candidate. The fee shall be made known to the party members, may be graduated, or waived to take into account special

## WDM Elections and Nominations Rules 2021

interest groups and may be different from the fees levied on aspiring candidates in the party primaries.

48.4.4 An aspiring candidate shall submit to National Election Board of the party the following:

- i. duly filled application form together with a signed declaration of commitment to the party's constitution, policies and principles,
- ii. a self-declaration form,
- iii. copies of the person's national identity card or valid passport (the document used by the nominee to register as a voter) or affidavit
- iv. copies of the candidate's academic qualifications (when applicable) from the relevant institutions,
- v. evidence of registration as a member of the party
- vi. a receipt or evidence of payment of nomination fee (when applicable)
- vii. If a party list PWD, a certificate and form signed by a medical doctor
- viii. Duty signed political party code of conduct
- ix. Duly filed nomination form
- x. Clearance from EACC (the statutory declaration under the leadership and integrity Act)
- xi. A signed declaration that the nominee has adhered to leadership and integrity requirements in chapter six of the Kenyan Constitution and other relevant statutes on leadership and integrity.

48.4.5 An aspiring candidate seeking nomination on the ground that the aspiring candidate is a person with disability shall submit a certification from the National Council for Persons with Disabilities.

48.4.6 An aspiring candidate seeking nomination on the ground that the aspiring candidate is a youth the person must have attained the age of eighteen

## WDM Elections and Nominations Rules 2021

years but has not attained the age of thirty-five years and such person shall provide documentary proof of his or her age.

48.4.7 The Principles for consideration by the party before nomination of its members to the party list include; -

- i. That the party will ensure that the process is inclusive, free, fair and peaceful
- ii. That there is representation of all interests in the society including those of workers, professionals and business community, marginalised communities and groups such as women and children, older members of the society, persons with disabilities and minorities.
- iii. That the wishes of the people with respect to the nominees are respected and prioritized
- iv. That affirmative action measures are taken into account to ensure that not more than two thirds of persons of any one gender dominate positions in any single organ.
- v. That party members are rewarded for loyalty and service
- vi. That party members are rewarded for their material, intellectual and moral contribution to the party
- vii. Regard will be had on merit in nomination which can be a factor of various variables not limited to education level, popularity among the people and relevant skills

48.4.8 The National Elections Board shall

- i. issue a notice to its members regarding any exercise in the party nomination of Party Lists,
- ii. the party shall notify its members at least seven days before the date of the exercise,



## WDM Elections and Nominations Rules 2021

- iii. the date and the venue of the exercise, the persons eligible to participate in the exercise,
- iv. the party officials who shall be responsible for the exercise,
- v. the duration of the exercise,
- vi. where any aggrieved may file any grievances regarding the exercise, the party organs that will hear and determine any appeal and the fee, if any, that should be paid.

48.4.8 The party nomination of Party Lists must be in compliance with the party nomination rules and procedures.

48.4.9 The names in the Party List shall be in the order of priority.

48.4.10 The Party List shall be a closed list, that is, the list may not be amended after it has been submitted to the Commission.

48.4.11 The Wiper Democratic Movement Party List shall reflect the regional and ethnic diversity of the people of Kenya. This criterion is not applicable in the case of Party Lists for county assembly seats.

48.4.12 The nominees on the lists must be members of the party.

48.4.13 The nominees on the list must be registered voters.

48.4.14 The Party List shall not contain a name of a candidate nominated for an election in any of the single majority electoral constituencies.



## WDM Elections and Nominations Rules 2021

- 48.4.15 The Party List must be signed by the authorized officials of the Wiper Democratic Movement
- 48.4.16 Each Party List nominee shall, after nomination, submit to the Commission a letter stating his or her intention to serve if nominated.
- 48.4.17 The Wiper Democratic Movement shall submit the Party List to the Commission on the day designated by the Commission.
- 48.4.18 The Wiper Democratic Movement shall submit the following party lists to the IEBC;
- (i) The national assembly party list
  - (ii) Senate women party list
  - (iii) Senate youth party list
  - (iv) Senate (person with Disability) party list
  - (v) County assembly (marginalized Group) party list
  - (vi) County Assembly(gender) party list

## **48.5 Criteria on each party list submitted to the Commission by the WDM**

### **48.5.1. National Assembly Party List**

#### 48.5.1.1 Party List for nomination to the National Assembly Party List-

- i. shall have twelve (12) names of nominees.



## WDM Elections and Nominations Rules 2021

- ii. The nominees to the Party List must have similar qualifications as those required of candidates contesting for elections as members of the National Assembly.
- iii. The Party List must include nominees to represent the youth, persons with disabilities and workers and any other special interests.
- iv. Among the first four nominees on the list, there shall be a person to represent a youth and person with disability and a worker and any other special interest group identified by the party. One nominee cannot represent more than one special interest. The Party List must indicate the special interest that each nominee represents.
- v. To meet the gender requirement, the order of the nominees in the Party List shall alternate between women and men candidates.
- vi. To meet the requirement on regional diversity, nominees will be distributed amongst the different counties. Where two of the nominees in the list are from the same county, they shall not immediately follow each other on the list.
- vii. To meet the requirement of national outlook, nominees shall be from different ethnic communities. Where two of the nominees in the list are from the same ethnic community, they shall not immediately follow each other on the list.

### **48.5.2. Senate (Women) Party List**

#### 48.5.2.1 Party List for nomination of Senate (Women) Party List-

- i. The Senate (women) Party List must have 16 names of women nominees that are members of the Party



## WDM Elections and Nominations Rules 2021

- ii. The nominees to the Party List must have similar qualifications as those required of candidates contesting for elections as members of the Senate.
- iii. The senate nominees list must contain nominees from diverse counties within the Country. Where two of the nominees in the list are from the same county, they shall not immediately follow each other on the list.
- iv. To meet the requirement of national outlook, nominees will be selected from different ethnic communities. Where two of the nominees in the list are from the same ethnic community, they will not immediately follow each other on the list.

### **4.5.3 Senate (Youth) Party List**

#### 4.5.3.1. Party List for nomination of Senate (Youth) Party List-

- i. The Senate (youth) Party List must have 2 names of qualified youth nominees, being one woman and one man.
- ii. The nominees to the Party List must have similar qualifications as those required of candidates contesting for elections as members of the Senate.
- iii. To meet the requirement of regional diversity, not more than one nominee in the Party List shall be from the same county.
- iv. To meet the requirement of ethnic diversity, not more than one nominee in the Party List shall be from the same ethnic community.
- v. The two nominees must be between 18 and 35 years of age



#### **4.5.4 Senate (Person with Disability) Party List**

##### 4.5.5 Party List for nomination of Senate (Persons with disability) Party List-

- i. The Senate (persons with disability) Party List must have 2 names of qualified persons with disability nominees, being one woman and one man.
- ii. The nominees to the Party List must have similar qualifications as those required of candidates contesting for elections as members of the Senate.
- iii. To meet the requirement of regional diversity, not more than one nominee in the Party List shall be from the same county.
- iv. To meet the requirement of ethnic diversity, not more than one nominee in the Party List shall be from the same ethnic community.
- v. The two nominees must be certified as persons with disabilities by the National Council for Persons with disabilities

#### **4.5.6 County Assembly (Marginalized and Minorities Group) Party List**

##### 4.5.6.1 Party List for nomination of County Assembly (Marginalized and Group) Party List:

- i. The County Assembly (marginalized and minorities group) Party List must have 8 names of qualified marginalized and minority group nominees.
- ii. The nominees to the Party List must have similar qualifications as those required for candidates contesting for elections as members of the County Assembly.
- iii. To meet the gender requirement, the order of the nominees in the Party List shall alternate between women and men candidates.
- iv. Among all the 8 nominees, the various special interest groups must be represented. There shall be at least members representing minority ethnic,



## WDM Elections and Nominations Rules 2021

religious and cultural communities in the County, an old member of the society, a youth, a woman, a person with disabilities and a person representing workers in the County.

### **4.5.7 County Assembly (Gender) Party List**

#### 4.5.7.1 Party List for nomination of County Assembly (Gender Top Up) Party List –

- i. The County Assembly (Gender Top Up) Party List must have the number of nominees reflecting the number of wards in each of the respective counties.
- ii. The nominees to the Party List must have similar qualifications as those required of candidates contesting for elections as members of the County Assembly.
- iii. To meet the gender requirement, the order of the nominees in the Party List shall alternate between women and men candidates.
- iv. To ensure that the constitutional threshold of 2/3<sup>rd</sup> gender is met, the gender with less numbers than required by the Constitution of Kenya will be prioritized.



## **49. PARTY CAMPAIGN AND ELECTION REGULATIONS**

### **49.1 General Party Campaign Principles**

49.1.1 The Wiper Democratic Movement seeks to promote and apply the Code set out below for the purpose of conducting campaigns during elections

49.1.2 The regulations are directed to members, officials and candidates on their obligations under during the campaign period. We also undertake to acknowledge the authority of the Independent Electoral & Boundaries Commission in regard to the exercise of its statutory' and constitutional power and to promote and facilitate the Commission's mandate.

### **49.2. Campaign Process**

49.2.1 During campaigning, all our candidates and election officials shall adhere to existing electoral and civil laws as well as the provisions of the National and the party constitution.

49.2.2 Besides existing laws; -

- i. Candidates, agents and Party workers shall not obstruct, disrupt, break- up or cause to be broken up meetings or rallies organized by other Political Parties and candidates: nor shall they interrupt or prevent speeches and the distribution of handbills or leaflets, and the posting of posters by other Parties' and candidate.
- ii. All candidates vying on the party ticket, party members and agents must not destroy, remove, deface or in any way tamper with paraphernalia,



## WDM Elections and Nominations Rules 2021

logos, symbols, handbills and other publicity materials of other Parties and Candidates.

- iii. All our candidates, party members and agents shall desist from the carrying of arms and offensive weapons and the display of same, and shall extend co-operation to the law enforcement agencies, particularly for the purpose of recovery of illegal arms.
- iv. No party candidate shall take any extra-legal initiative for the release of any person arrested for offensive weapons during campaigns and elections and on account should any Party or Candidate initiate extra-legal measures for the release of such persons from lawful custody.
- v. The Wiper Democratic Movement Candidates, party members, agents and supporters should adhere to the Public order requirements by coordinating their campaign activities such that no two Political Parties shall hold public meetings or rallies in the same locality on the same day. if such meetings or rallies are likely to be so close to each other that a possibility of creating conflict arises.
- vi. Where dates, venues and timing for any of the above activities clash, representatives of the Parties or Candidates involved shall in collaboration with the Police meet in a cordial manner to resolve issues without resorting to violence.
- vii. Our party Candidates, Party members, agents and Party workers shall avoid all activities constituting electoral offences such as offering gifts and gratification or inducing other persons to stand or not to stand as candidates, to withdraw or not to withdraw their candidature, buying voter identity cards from voters and generally bribing of voters.



## WDM Elections and Nominations Rules 2021

- viii. Our Party candidates, Party members' agents and Party workers shall refrain from holding public meetings within 48 hours to the polls and from canvassing within the precincts of polling stations on polling day.
- ix. No party Candidates members and agents shall resort to the use of abusive or inflammatory language or incitement: and specifically, all Political Parties and members shall refrain from incitement to hatred on the basis of gender, ethnicity, religion, creed or sect or any other criteria.
- x. Our party and its candidates undertake to be non-offensive and in this regard, to erect non-offensive banners, placards advertisement and notices and to promote campaigns by lawful means only.
- xi. Candidates will refrain from publishing offensive literature and campaign material and may express divergent opinions in a peaceful and persuasive manner.
- xii. All party Candidates shall in the course of campaigning avoid plagiarizing the symbols, slogans and paraphernalia of other Parties or Candidates for legal or illegal activities and refrain from impeding the rights of access of other Political Parties and Candidates for purposes of voter education, fund-raising, canvassing, and campaigning.



### **49.3. Out-of-campaign activities**

49.3.1 The Wiper Democratic Movement Party its members and party officials and supporters shall:-

- i. Continue to scrupulously observe all laws and rules so long as they continue to apply outside election and campaign periods,
- ii. Desist from the use of inflammatory language, heightening of ethnic and other tensions, personal attacks and acts of violence either directly by themselves, through leaders, assigns, members, representatives, agents and privies or by proxies.
- iii. For the imperatives for a level playing field and equality of opportunities for all Political Parties shall continue to prevail at all times outside elections and campaigns.
- iv. Ensure that its agents and officials are sufficiently trained for registration and other exercises.
- v. Ensure fairness in its activities, moderating such activities in a manner that minimizes tension and avoids misrepresentation.

### **49.4. Election related guidelines**

49.4.1 During elections, whether general election or a by-election, in which our party is participating, the party shall jointly with other political parties: -

- i. Work to safeguard the integrity of the electoral process and shall ensure absolute transparency and honesty before, during, and after polling day transactions



## WDM Elections and Nominations Rules 2021

- ii. On polling day extend full co-operation educate election officials in the performance of their legal duties in order to ensure peaceful and orderly polling.
- iii. Actively discourage members and supporters from engaging in multiple voting and other forms of cheating such as voting in the name of deceased and absent voters as well as minors and other unqualified persons.
- iv. Refrain or engage in confrontation or open arguments with election officials at the polling stations, any complaint protest or challenge relating to processes and procedures at a polling station shall either be routed through the party agent(s) to the presiding officer or the security officer for resolution. Thereafter an aggrieved party or person is at liberty to seek redress in the law courts of the state.
- v. On polling day observe rules and regulations restricting the number of individuals with access to the polling station.
- vi. Recognize and acknowledge the rights of accredited observers and monitors and other accredited persons for the purpose of entering a polling station or area and observing the conduct of elections.
- vii. Recognize that the use of thugs terrorizes voters and creates tension and an atmosphere of intimidation on polling day. Consequently, all political panics shall always refrain from the recruitment and deployment of such individuals on polling day and all times.
- viii. Together with the independent electoral & boundaries commission to create on polling day an atmosphere that is conducive to free and fair voting and to refrain from coating, threatening and intimidating other





## WDM Elections and Nominations Rules 2021

political parties and candidates so as to prevent them from carrying out their lawful activities at the polling station.

- ix. Shall refrain from fraudulently procuring results and votes by invasion occupation of polling centers and any other lawful means.
  
- x. To instruct its agents in attendance at polling stations to perform their duties in accordance with the electoral laws and regulations and to co-operate with election officials for the efficient, transparent and uninterrupted administration of elections.



WDM Elections and Nominations Rules 2021

**THE CODE OF CONDUCT  
OF THE  
WIPER DEMOCRATIC MOVEMENT (WDM)  
OCTOBER 2021**

**1. Preliminaries**

1.1. In this Code of Conduct –

“National Executive Council (NEC)” means the executive organ of the Party;

“Member” means a member of the Party; and

“Party” means Wiper Democratic Movement (WDM).

1.2. Every member shall subscribe to this Code of Conduct and sign the pledge of commitment provided in Annex A at the time of joining the Party.

**2. Objectives**

2.1. This Code of Conduct seeks to set out the standards of behaviour generally accepted of members of the Party, including officials and staff of the Party, during their membership with the Party and performance of their function in accordance with the Party Constitution and all applicable laws.

2.2. Without prejudice to the generality of rule 2.1, the objectives of this Code of Conduct shall be to –

- a) regulate the behavior of members in relation to party affairs;
- b) set out the accepted standards of behaviour of members;



## WDM Elections and Nominations Rules 2021

- c) make all members accountable for their behaviour;
  - d) maintain public confidence and trust in the Party;
  - e) provide a legitimate and transparent yardstick for the evaluation of the behaviour of members;
  - f) provide for greater certainty and guidance on how to reconcile a member's private lives with their public life; and
  - g) establish common rules and provide the means by which questions relating to the accepted standards of behaviour are addressed.
  - h) Enhance Party Loyalty
  - i) Provide grounds for dismissing and disciplining those in breach of the Party Rules and Code of Conduct.
3. The Code of Conduct forms part of the agreed relationship between individual WDM members, and outlines the minimum code of conduct expected by the Party of all its members. The NEC may supplement or amend these codes of conduct at any time.

### 4. **Conduct of the members**

4.1. In the performance of their duties, members shall conduct themselves with the highest standard of personal integrity and shall not involve themselves in dishonorable conduct. In this regard, every member shall observe the following principles of conduct and ethical behaviour –

- a) respect and adhere to the Constitution of Kenya, all laws of the land in particular the political parties and Elections laws and the WDM Party Constitution;
- b) Promote the success of the Party for the benefit of the people of Kenya as

## WDM Elections and Nominations Rules 2021

a whole and in doing so, the member shall have regard to –

- (i) carrying out duties efficiently, honestly, transparently and in an accountable manner;
  - (ii) consequences of actions that they take;
  - (iii) the interests of the people of Kenya;
  - (iv) the need to foster the Party's relationships with the people of Kenya, governance institutions, partners of the Party, other political parties and the private sector;
  - (v) the impact of the Party on the people of Kenya; and
  - (vi) the desirability of the Party to maintain a reputation for high standards as regards the rule of law, democracy, leadership and integrity, governance, justice and fairness.
- c) A member shall take personal responsibility for the reasonably foreseeable consequences of any actions or omissions arising from the discharge of the duties under the Party Constitution;
- d) A member who is an official of the Party is in a position of public trust and the authority and responsibility vested in the official shall be exercised by the officer in the best interest of the Party and that of the people of Kenya;
- e) Carry Out Duties In A Manner That Maintains Public Confidence In The Integrity Of The Party, Treat Members Of The Public With Courtesy And Respect, Not Discriminate Against Any Person, And Maintain High Standards Of Performance And Level Of Professionalism Within The Party;
- f) Avoid Any Situation That Might Give Rise To Conflict Of Interest Or, The Appearance Of A Conflict Of Interest. Where A Member Believes That There Exists An Actual Or Potential Personal Interest In A Matter Relating To The



## WDM Elections and Nominations Rules 2021

Party Or The Office The Member Holds Or In Any Transaction Contemplated In The Performance Of His Or Duties, Such Member Shall Notify The Relevant Person As Promptly As Practicable And Shall In Any Event Not Participate In Any Decision By The Party Or The Relevant Office That Relates To The Matter That Gives Rise To The Conflict Of Interest.

For The Purposes Of This Section A **“Conflict Of Interest”** Means A Situation Where A Member’s Private Interest Or That Of A Family Member Interferes Or Appears To Interfere In Any Way With The Interests Of The Party As A Whole Or The Office The Member Holds.

- g) Declare An Interest In A Proposed Transaction With The Party Or Any Other Office The Member Holds And For This Purpose All Such Declarations Shall Be Recorded.
- h) Not Use The Position Held In The Party Or In The Public To Unlawfully Or Wrongfully Enrich Themselves Or Any Other Person;
- i) Not misuse Party or public resources, and shall take all reasonable steps to ensure that Party or public property in the member's custody, possession or control is taken care of and is in good repair and condition and is used for the benefit or the Party and public;
- j) Accurately and honestly represents information to the public;
- k) not directly or indirectly use or allow any person under the member's authority to use any information obtained through or in connection with the office the member holds, which is not available in the public domain, for the furthering of any private interest;

- l) As an official or the Party of holder of a public office, shall during the term of office and after leaving the office maintain the confidentiality of information received by virtue of that office and shall not disclose the confidential information or allow the same to be disclosed to the detriment of the party, unless authorized by the Party or the public office or as may be required by law.
- m) a gift or donation given to a member in the course of official duties shall be treated as a gift or donation to the Party, and the member shall declare the gift or donation to the Party. Provided that members shall not accept any gift or donation which is likely to compromise their personal judgment or integrity or bring the Party into disrepute;
- n) At all times, carry out the duties with impartiality and objectivity in accordance with the law and the Party Constitution and shall not practice favouritism, nepotism, tribalism, cronyism, religious bias or engage in corrupt or unethical practices;
- o) conduct private affairs in a manner that maintains public confidence in the integrity of the office they hold and the Party;
- p) Uphold the principle of meritocracy in carrying out public business, including making public appointments, awarding contracts, or anything with financial implications or recommending individuals for rewards or benefits; and
- q) Not allow or direct a person under their supervision or control to do anything, or cause anything to be done through another person that would



## WDM Elections and Nominations Rules 2021

constitute a contravention of this Code if done by the member.

- r) Consistently pay the party's subscription fees when the same is due as per the party's rules.
- s) In promoting party loyalty, act in ways that support the party's ideologies and interests.

### **5. Social Media Conduct**

- 5.1. The party is innovative and dynamic with its digital strategy and is committed to offering the best digital experience possible while being open to change.
- 5.2. The party seeks to create interactive spaces for its members and the public and welcomes constructive criticism, though abusive comments may be reported and auctioned as appropriate.
- 5.3. The party is committed to build a diverse movement that reflects the whole of society, every member must be committed to treating all people with respect and dignity online. The party stands against all forms of abuse and will take action against those that are guilty of online intimidation, bullying, abuse, harassment, hateful language or any form of discrimination on the basis of gender, tribe, race, religion, age, or disability.
- 5.4. Anonymous accounts and hiding one's identity for the purpose of abusing others is not permitted.
- 5.5. The use of sexualized language or imagery is forbidden and unacceptable.

- 5.6. Trolling and disrupting the ability of others to debate online is not acceptable
- 5.7. Persistently mentioning and making contact with others when this is unwelcome is misconduct under this code
- 5.8. All members have a responsibility to challenge abuse and to support victims; and are called upon to educate and discourage abusers rather than responding in kind.
- 5.9. Members are urged to report online abusive behaviour to the Party for appropriate action. The reporting may be by anyone one member and not limited to those individually subjected to abuse.

## **6. Sexual Harassment and Gender Discrimination.**

- 6.1. The WDM is committed to equality and has continuously advocated for equal opportunities for all and is against discrimination and harassment on the basis of one's gender in the party and in the society.
- 6.2. Sexual Harassment is misconduct and is sex-based behaviour that is unwelcome and offensive to its recipient.
- 6.3. Members are advised that sexual harassment is a form of sex discrimination that takes place when someone is subjected to unwelcome and unwanted sexual behaviour or other conduct related to their gender and this may be in through inappropriate and unwelcome physical touch, inappropriate comments to assault which can be either verbal, non-verbal or physical and can take place both in person or online.





## WDM Elections and Nominations Rules 2021

- 6.4. The WDM will not tolerate any form of discrimination or harassment based on gender and will ensure a safe environment for all its members

### **7. Tribalism and other forms of discrimination**

- 7.1. The WDM is a party that is against tribalism and racism of any kind and is committed to combating all forms of racism, including anti-Semitism and Islam phobia Labour will not tolerate racism in any form inside or outside the party.
- 7.2. The party is a welcoming home to members of all communities, with no place for any prejudice or discrimination based on ethnicity, race or religion as long as they share in its ideology, its aims and values, and encourages open political debate and campaigns.
- 7.3. Any behaviour or use of language which targets or intimidates members of ethnic or religious communities, or incites tribalism or undermines the party's ability to campaign against any form of tribalism or sectarianism is unacceptable conduct within the Party.

### **8. Breach and Enforcement of the Code of Conduct**

- 8.1. A breach of this Code of conduct amounts to misconduct for which a member shall be subjected to disciplinary proceedings.
- 8.2. Breach of the code of conduct may further include any of the following acts;
  - a) Denouncing the party in public

- b) Acting in ways that do not promote party political ideologies and interests
  - c) Not paying monthly subscription of the party
  - d) Associating oneself with party competitors in ways that may cause confusion to the members of the public.
  - e) Failure to disclose a conflict of interest
  - f) Abusive behavior
  - g) Violent behavior against the provisions of the code
  - h) Practice of any form of discrimination
- 8.3. A person who alleges that a member has committed a breach of this Code of Conduct may lodge a complaint with the nearest Party office or to the Party Secretary General and the office or Secretary General shall register and inquire into the complaint in accordance with the Party Constitution and Party Disciplinary Procedures.
- 8.4. Anyone found guilty of breach of this code shall be liable to punishment by way of a fine or such other means as defined in the party disciplinary rules and for gross breaches this may include suspension or dismissal from the party with the result that such a member may lose their elected or nominated position.



**9. Review of the Code of Conduct**

- 7.1.** The National Executive Council shall, on its own motion or on request by a member, from time to time review this Code of Conduct to ensure it remain relevant.



**ANNEXURE A**

**PLEDGE OF COMMITMENT IN LINE WITH THE CONSTITUTION**

I.....  
of.....belonging  
to .....Ward within the .....  
County, do hereby solemnly declare that;

1. That I have exercised my constitutional right to join the Party and therefore agree and accept to be bound by its constitution and pledge my allegiance to the Party, the Party constitution and the Constitution of Kenya.
2. That I shall serve Party faithfully and diligently and be loyal to the Party and the people of Kenya.
3. That I shall pursue the goals of attaining peaceful, democratic change in my Country Kenya, and the subsequent transformation of my country into a modern, accountable and stable democratic State.
4. That I shall abide by the Party’s Code of Conduct and shall desist and not partake in any violence, theft, corruption, rumor mongering, mudslinging or any other commission or omission inconsistent with my membership to the Party.
5. That I shall work to promote the rule of law in Kenya including the legislative supremacy, the independence of the judiciary and the right of every person in Kenya to hold a different opinion from the other.



## WDM Elections and Nominations Rules 2021

6. That I shall always defend, protect and respect the protection of human rights and democratic freedoms.
7. That I shall oppose and never practice violence, nepotism, factionalism, clannism, sexism and tribalism or any other form of discrimination based on race, tribe, colour, gender, religion or personal preferences.
8. That I shall be transparent in my business transactions and never allow my personal interest to prevail over public interest and in this regard, I undertake to file and complete annually an asset declaration form to be lodged with the Party.
9. That I shall accommodate criticism and observe the social democratic principles and values of transparency, accountability, freedom, servant and empathetic leadership, equality, accountability and good governance.
10. That I shall pay party subscriptions and dues as evidence of my commitment to the party and its programs and growth, and that any deliberate failure to pay such dues constitutes an offence punishable by the Party.
11. That I shall Promote gender equity at all levels of governance and ensure pursuit of implementation of the party's vision of a 50:50 ratio rights from branch to national level.
12. That I shall Advocate for nonviolence in pursuit of the my personal and the party's vision and objectives



WDM Elections and Nominations Rules 2021

13. That I shall show Patriotism to my Country

14. That I shall promote inclusion of minorities and marginalized in the society in governance.

15. That I hereby irrevocably agree that this pledge of commitment constitutes a binding legal contract between me and the Party and that I shall obey any notice from the NEC requiring me to vacate any position or any other office that the party nominated, appointed, elected me to or caused my election to in the event that I breach the Code of Conduct, this pledge or in the event that I am expelled from this party.

**Any member who evidently defaults on the above pledges shall be subjected to;**

1. Suspension from the party until the member reforms.
2. Denial by WDM of its ticket for candidature.
3. Denial of WDM of party elective leadership.
4. If the default borders on criminal offence, the Party handing over the case to the State for appropriate action

DATED AT..... THIS.....DAY OF.....

SIGNATURE .....

FULL NAME OF CANDIDATE .....

Signed on the.....day of.....20.....

.....

.....

Signature  
Secretary General

Signature  
Member



**ANNEXURE TWO**

**APPLICATION FORM FOR NOMINATION  
IN THE PARLIAMENTARY AND CIVIC ELECTIONS FOR  
THE WIPER DEMOCRATIC MOVEMENT - (WDM)**

(To be completed in triplicate)

TO:

Chairman

Wiper Democratic Movement

P.O. Box 403-00100

NAIROBI

I..... (Full Names) do hereby apply for Party

Nomination to enable me to contest the forthcoming General Elections On a  
Wiper Democratic Movement ticket in the.....Constituency/Ward/Location  
in..... District of.....County.

- I. NAME OF CANDIDATE.....
- II. ADDRESS.....
- III. TELEPHONE.....
- IV. PARTY MEMBERSHIP NO.....
- V. VOTER'S CARD NO.....
- VI. IDENTITY CARD NO.....
- VII. CONSTITUENCY.....
- VIII. WARD/LOCATION.....

**(X) PROPOSER:**

- a) NAME .....
- b) PARTY MEMBERSHIP NO.....



WDM Elections and Nominations Rules 2021

- c) VOTER'S CARD NO.....
- d) IDENTITY CARD NO.....
- e) CONSTITUENCY/WARD/LOCATION .....
- f) DISTRICT.....
- g) PROVINCE.....
- h) SIGNATURE DATE ..... DATE.....

**i) SECONDER: -**

- a) NAME.....
- b) PARTY MEMBERSHIP NO.....
- c) VOTER'S CARD NO.....
- d) IDENTITY CARD NO.....
- e) CONSTITUENCY/WARD/LOCATION.....
- f) DISTRICT.....
- g) PROVINCE .....
- h) SIGNATURE.....DATE.....

(XII) a) I confirm I have not sought Nomination from any other registered Political party, or ( )

b)I confirm that I have revoked my Nomination by other registered parties which I had earlier on sought nomination (Candidate to tick ( ) whichever is applicable.

Dated at ..... This ..... Day of.....

**SIGNATURE**

.....

**FULL NAMES OF CANDIDATE**

**NB:**





## WDM Elections and Nominations Rules 2021

- i. All application forms must be accompanied by: -
- ii. A copy of a national identification
- iii. A copy of voter's card
- iv. A copy of the receipt for the application fees duly paid
- v. A copy of party membership card.

### **OFFICIALS USE ONLY: -**

APPLICATION FEE'S NO.....

DATE:.....

INFORMATION PROCESSED BY DATE.....

DATE:.....

Applicant must give below a brief life history, especially his/her specific role in promoting democracy, human rights, economy, social programs, etc. and confirm is not legally barred from contesting the forthcoming elections.



**ANNEXURE THREE**

**CERTIFICATE OF PLEDGE**

I,.....of ID No..... being desirous to stand during the forthcoming General Election as .....on an WIPER DEMOCRATIC MOVEMENT ticket for which I have already applied, do hereby pledge my total loyalty and commitment to my country Kenya, my Political Party, the WIPERMENT DEMOCRATIC MOVEMENT and my moral material and other to ensure the success of its plans and programs, I, affirm my total commitment and loyalty to the constitution and uphold the constitution and the laws of the land.

I further commit myself at all times to the authority of the Party by obeying, complying and supporting fully its constitution, regulations, policies, ideals as they may be laid down by its rightful leadership from time to time.

I further swear and affirm that once I am as a WIPER DEMOCRATIC MOVEMENT candidate, will not seek any other party's nomination. In the event that my application is unsuccessful I affirm that I shall support the Party's nominated candidate fully. In addition, in the event that my application and election are successful, I hereby undertake to contribute to the Party's funds, as per its rules.

Signed by me:

.....

In the presence of:

**COMMISIONER FOR OATH/MAGISTRATE**



WDM Elections and Nominations Rules 2021

**For official Use only.**

Information Verified By:.....

Date.....

Received at the Branch Office By.....

Date.....

Approved At The Head Office By ..... Issued

On.....

By.....

.....



WDM Elections and Nominations Rules 2021

**APPENDIX FOUR**

**CANDIDATE NOMINATION FEES RECEIPT**

**WIPER DEMOCRATIC MOVEMENT**

**Serial No.**

**(Insert Party logo here)**

**Candidate Nomination Fees Receipt**

**WDM Membership No.**

**Candidate's Name**

**Ward/Constituency**

**Nomination Fees paid:**

**Place of Issue;**

**Date:**

**Signature of Issuing Officer;**

**Designation of Issuing Officer:**

**Serial NO,**